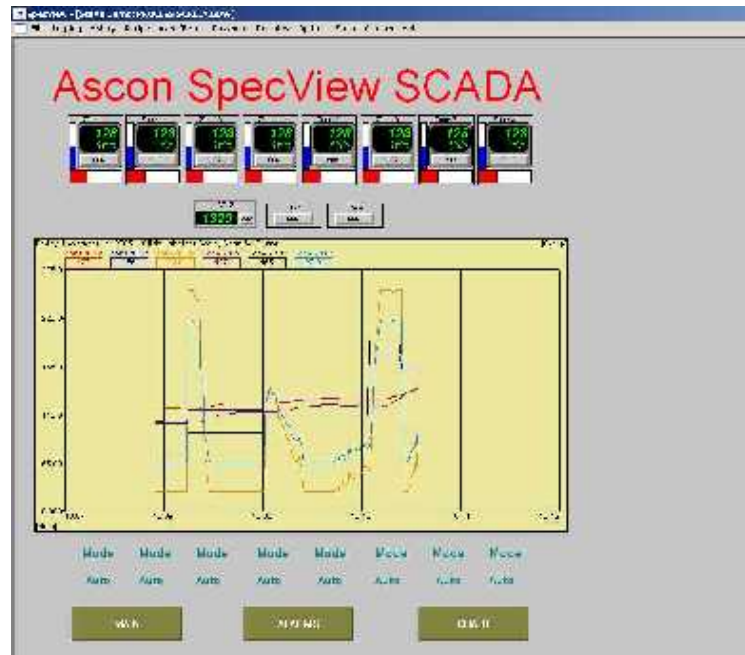


## Ascon SCADA Software for gammadue® and deltadue® controllers

- Runs on Microsoft Windows® Operating systems.
- Single Port and Multi Port versions with virtually unlimited instruments and screens.
- Auto detection and screen building of Ascon instruments- no tags lists to define.
- Up to 9 simultaneous communication ports with Modbus and Jbus protocol support.
- Data logging of any variable with adjustable replay rate.
- Multi-pen trend charts with historical replay and recipe options.

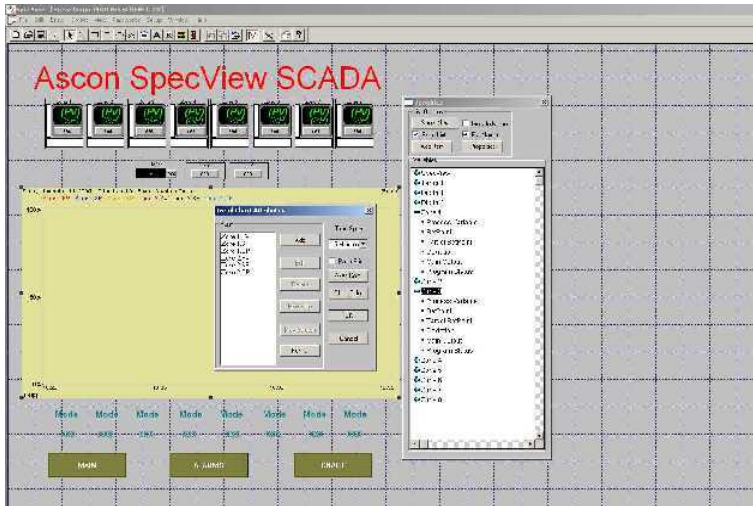


### more of what you asked for... Quick and Easy SCADA Software

**SpecView** is a low cost graphical user interface alternative to today's standard of high priced and complicated SCADA software. **SpecView** is designed to be simple when simple is all that is needed. With up to several hundred instruments connected, **SpecView** is designed to take minutes to have operational. Compare that to other SCADA packages that take days and weeks to load and configure.

**SpecView** is an ideal **Supervisory Control and Data Acquisition** package and comes standard with key features like unlimited real time trend charts, detailed process mimics, dynamic bar graphs, real time instrument views, precision data logging, custom report printing, large recipe management, and powerful alarm monitoring and logging. Available as options are historical replays, remote viewers, strategy controller options, and an OPC client.

**SpecView** uses an auto detection process when connected to Ascon **gammadue®** and **deltadue®** instruments and automatically builds the basic application. This features provides the user with virtually zero start-up costs. From here, the user can add trend charts and other desired graphical elements to make the system easy to use and navigate. SpecView provides for optimum process visualization of machines and plant floor operations.



Example of a typical SpecView configuration screen showing instrument views.

## **SPECVIEW SUPPORTED ASCON INSTRUMENTS**

### **GammaDue® Panel Controllers**

C1  
M1, M2, M3, M4, M5  
X1, X3, X5  
Q1, Q3, Q5  
J1, J3, J5

### **DeltaDue® DIN Rail Modules**

D1, D2, D3, D7, D8, D9

Other manufacturers and products as requested and ap-

## **Ordering Information**

PN: SV - A B C D - E F G H (see below for complete model code details)

<b>A</b>	<b>0 = Single Port</b>	<b>1 = Multi Port</b>
<b>B</b>	<b>0 = No Historical Replay</b>	<b>1 = Historical Replay</b>
<b>C</b>	<b>0 = No Strategy Controller</b>	<b>1 = Strategy Controller</b>
<b>D</b>	<b>0 = No OPC Client</b>	<b>1 = OPC Client</b>
<b>E</b>	<b>0 = No Remote Viewer 1</b>	<b>1 = Remote Viewer 1</b>
<b>F</b>	<b>0 = No Remote Viewer 2</b>	<b>1 = Remote Viewer 2</b>
<b>G</b>	<b>0 = No Remote Viewer 3</b>	<b>1 = Remote Viewer 3</b>
<b>H</b>	<b>0 = No Remote Viewer 4</b>	<b>1 = Remote Viewer 4</b>

## **Accessories**

Isolated Dual Channel RS232/485 Converter: AA9HWC133GD1

Non-isolated RS232/485 Converter and Cable: AA9HWRMC9R

**ASCON spa**  
20021 Bollate  
(Milano) Italy  
Via Falzarego, 9/11  
Tel. +39 02 333 371  
Fax +39 02 350 4243  
[www.ascon.it](http://www.ascon.it)  
[info@ascon.it](mailto:info@ascon.it)

**ASCON FRANCE**  
2 bis, Rue Paul Henri Spaak  
St. Thibault Des Vignes  
F-77462 Lagny Sur Marne -  
Cedex  
Tel. +33 (0) 1 64 30 62 62  
Fax +33 (0) 1 64 30 84 98  
[ascon.france@wanadoo.fr](mailto:ascon.france@wanadoo.fr)

**ASCON CORPORATION**  
1884 East Fabyan Parkway  
Batavia, Illinois 60510 USA  
Tel. +1 630 482 2950  
Fax +1 630 482 2956  
[www.asconcorp.com](http://www.asconcorp.com)  
[info@asconcorp.com](mailto:info@asconcorp.com)

## **WORLDWIDE NETWORK OF DIRECT SALES AND DISTRIBUTORS**

### **Europe**

Belgium, Cyprus, Croatia, Czech Republic, Finland, Germany, Great Britain, Greece, Holland, Ireland, Norway, Poland, Portugal, Romania, Russia, Slovenia, Spain, Sweden, Switzerland, Turkey, Ukraine.

### **Americas**

USA, Canada and Mexico

### **Around the World**

Australia, China, Egypt, Estonia, Hong Kong, India, Iran, Israel, Malaysia, New Zealand, Pakistan, Saudi Arabia, Singapore, Taiwan, Thailand, South Africa, and South East Africa.