

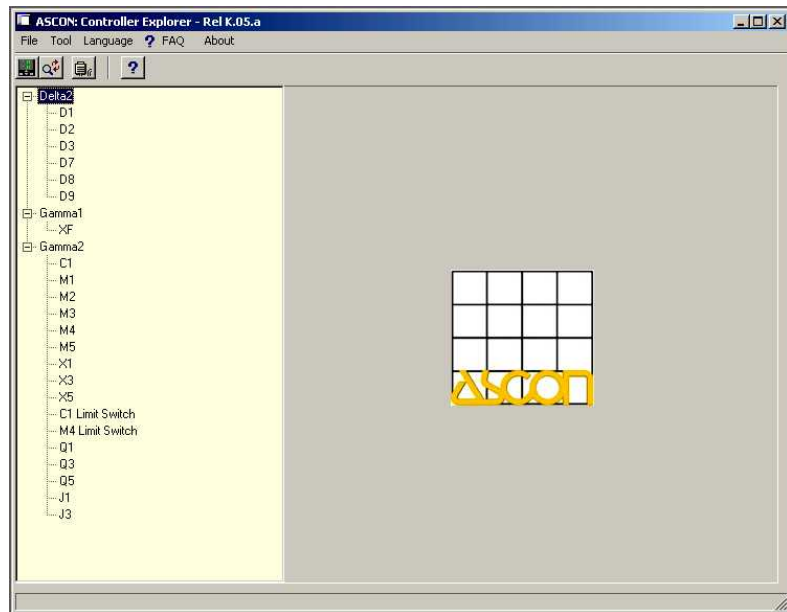
SW

S E R I E S

Controller Explorer

Configuration Software for **gammadue**[®] and **deltadue**[®] Controllers

- Runs on Microsoft Windows[®] Operating systems.
- No security devices or security codes are required to activate.
- Backward compatible with all previous controller firmware versions.
- Full support of English, Italian, and French languages.
- Extensive online help and FAQ section.
- Can customize language and parameter naming to suit individual and application needs.
- Modbus test utility for communication test and diagnostics.



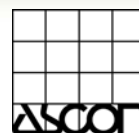
just what you asked for . . . Quick and Easy Configuration Software

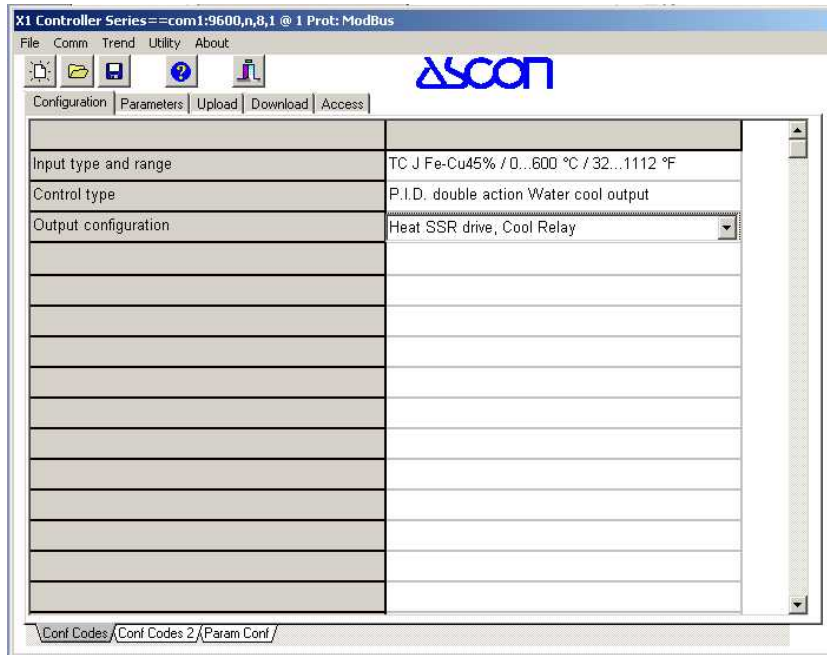
Ascon's Controller Explorer is a software utility program that allows for complete **gammadue**[®] and **deltadue**[®] instrument configuration from a standard personal computer. Controller Explorer searches and auto-detects for a connected instrument via RS232/RS485 Modbus[®] or Jbus communications or, for some models, using Ascon's APG2SCI communications converter cable. Once detected, the user follows simple menu selections in a logical configuration sequence.

With the Controller Explorer utility, programming can be performed offline and then downloaded and uploaded to similar controllers. Controller Explorer allows for easy modification and configuration of all parameters in one convenient screen and environment. Configurations can then be saved to disk, printed for records, or emailed for support and review.

Controller Explorer also includes a simple trend utility of SP, PV, and OP to assist with instrument commissioning and tuning.

E





Example of a typical configuration screen showing J thermocouple Input Type selected, Control Action of Heat with water Cooling, and SSR drive for heat and relay for cooling outputs. Notice additional 'tabs' on the lower screen for additional Configuration parameters and additional 'tabs' on the top of the screen for Parameter setup. Then simply Download, Save, and Print.

CONTROLLER EXPLORER SUPPORTED INSTRUMENTS

GammaDue® Panel Controllers

C1, C1-FM
M1, M2, M3, M4, M4-FM, M5
X1, X3, X5
Q1, Q3, Q5
J1, J3, J5

DeltaDue® DIN Rail Modules

D1, D2, D3, D7, D8, D9

GammaUno® Panel Controllers

XF

Ordering Information

Controller Explorer Software CD: APG2SW

Configuration Cable if no 232/485 comms: APG2SCI

Configuration Cable for RS232: APG232

Configuration Cable for RS485: AA9HWRMC9R

Configuration Cable Adapter for USB: APG232-USB

ASCON spa

20021 Bollate
(Milano) Italy
Via Falzarego, 9/11
Tel. +39 02 333 371
Fax +39 02 350 4243
www.ascon.it
info@ascon.it

ASCON FRANCE

2 bis, Rue Paul Henri Spaak
St. Thibault Des Vignes
F-77462 Lagny Sur Marne -
Cedex
Tel. +33 (0) 1 64 30 62 62
Fax +33 (0) 1 64 30 84 98
ascon.france@wanadoo.fr

ASCON CORPORATION

1884 East Fabyan Parkway
Batavia, Illinois 60510 USA
Tel. +1 630 482 2950
Fax +1 630 482 2956
www.asconcorp.com
info@asconcorp.com

WORLDWIDE NETWORK OF DIRECT SALES AND DISTRIBUTORS

Europe

Belgium, Cyprus, Croatia,
Czech Republic, Estonia,
Finland, Germany, Great Britain,
Greece, Holland, Ireland,
Norway, Poland, Portugal, Romania,
Russia, Slovenia, Spain,
Sweden, Switzerland, Turkey,
Ukraine.

Americas

USA, Canada and Mexico

Around the World

Australia, China, Egypt, Hong Kong,
India, Iran, Israel, Malaysia, New Zealand,
Pakistan, Saudi Arabia, Singapore, Taiwan,
Thailand, South Africa, and South East Africa.