

sigmadue Control Unit CU-02



User Manual
M.U. CPU-CB/CU-02-2/07.07
Cod. J30 - 478 - 1ACU02 E



Copyright © 2005 ASCON spa

All rights reserved

No part of this document may be stored in a retrieval system, or transmitted in any form, electronic or mechanical, without prior written permission of ASCON SpA.

ASCON has used the best care and efforts in preparing this book and believes the information in this publication are accurate. The ASCON Products are subjected to continuous improvement, in the pursuit the technological leadership, these improvements could require changes to the information of this book. ASCON reserves the right to change such information without notice. ASCON makes no warranty of any kind, expressed or implied, with regard to the documentation contained in this book. ASCON shall not be liable in any event - technical and publishing error or omissions - for any incidental and consequential damages, in connection with, or arising out of the use of this book.

sigmadue[®], *gammadue*[®] and *deltdue*[®] are trademarks of ASCON spa.

All the other tradenames or product name are trademark or registered trademarks.

ASCON spa

Via Falzarego 9/11

20021 Baranzate (Milano) Italy

Phone ++39-02-333371 - Fax ++39-02-3504243

<http://www.ascon.it>

info@ascon.it

INDEX

Prerequisites	v
Current Documentation on the Internet	v
Chapter 1	
Hardware description	1
1-1 Architecture	2
1-1-1 Communication ports	2
1-1-2 Auxiliary digital I/O	3
1-1-3 Diagnostics LEDs	3
Chapter 2	
Installation	4
2-1 Mechanical installation	4
2-1-1 Installing modules and Removing modules	4
2-2 Electrical installation	4
2-2-1 Connect the communication cables	4
2-2-2 Connector “A” connections	5
Chapter 3	
CPU setup	6
3-1 Connection of the CPU Setup Terminal	6
3-1-1 RS232 Serial Communications Connection	6
3-1-2 USB Serial Communications Connection	7
3-1-3 Setting the Communications Parameters of the CPU RS232 Service Port	7
3-1-4 Entering the Setup Menu	8
3-2 Main Menu	9
3-2-1 Network Setup Menu	9
3-2-2 CPU Setup Menu	9
3-2-3 CAN Setup Menu	10
3-2-4 CPU Info Menu	11
3-2-5 ETHERNET Setup Menu	11
3-2-6 Serial Setup Menu	12
3-2-7 CPU Setup Menu	13
3-2-8 STARTUP Setup Menu	13
3-2-9 Persistency Setup Menu	13
3-2-10 CLOCK Setup Menu	14
3-2-11 Modbus TCP/IP Setup	14
3-2-12 Modbus TC/IP Secure ADDR5 Table Menu	15
3-2-13 Modbus TC/IP Priority ADDR5 Table Menu	15

Chapter 4

Programming the CPU	17
4-1 Installing OpenPCS	17
4-1-1 Hardware and Software Requirements	17
4-1-2 Installation	17
4-1-3 Starting OpenPCS	17
4-1-4 Configuring OpenPCS	18
4-2 OpenPCS Setup	18
4-3 Software Utilities	20
4-3-1 OPC Server	20
4-4 Communication Ports Protocols	20
4-5 Auxiliary digital port	21
4-6 Watchdog Timer	21
4-7 CANopen Extension for Ascon sigmadue CPU	21
4-7-1 Introduction	21

Chapter 5

Ascon Function Blocks Libraries	23
5-1 AsconACLib	23
5-2 AsconBasicIOLib	24
5-3 AsconControlLib	25
5-4 AsconCPULib	25
5-5 AsconMBCommLib	25
5-6 AsconLibrary	26
5-7 Firmware Function Blocks List	27

Chapter 6

Technical data	29
6-1 General conditions	29
6-2 Ambient conditions	29

Chapter 7

Reference documents	30
----------------------------------	-----------

Prerequisites

The products described in this manual should be installed, operated and maintained only by qualified application programmers and software engineers who are almost familiar with EN 61131-3 concepts of PLC programming, automation safety topics and applicable national standards.

Current Documentation on the Internet

Make sure you are always working with the latest documentation published.

ASCON spa reserves the right to make any technical extension and change to the equipments that would serve the purpose of technical progress. Up to the time that a new manual revision is published, any update or change will be documented on the Internet at:

<http://www.ascon.it>

Chapter 1

Hardware description

.The system described in this User Manual is mainly composed of three components:

- Ascon **sigmadue** series CPU (CU-02), ready to work with OpenPCS EN 61131-3 compliant programming system;
- Ascon **sigmadue** I/O-CB remote I/O series of modules;
- Infoteam OpenPCS programming system.

sigmadue CPU is a powerful processing unit, based on an ARM RISC processor, different types of memory and several communication ports.

sigmadue I/O-CB is a complete family of I/O analogue and digital remote modules with special functions, based on the CANopen protocol over a CAN bus.

Infoteam OpenPCS is a powerful and useful standard programming system for PLC applications.

It is a clearly structured, easily operated tool for editing, compiling, debugging, managing and printing PLC applications in all the development phases.

OpenPCS supports EN61131-3 programming under Windows 2000, XP and Windows Server 2003.

Ascon **sigmadue** line is based on the **sigmadue** remote I/O system, combining its functionality with the capabilities of a PLC. The modular concept and the possibility of fieldbus networking means that you can adapt the system to your requirements quickly and easily. This gives the **sigmadue** automation system an especially economical price/performance ratio.

This User Manual handbook introduces you to work with **sigmadue** CPU line and the Infoteam OpenPCS programming system.

It explains how to install the hardware and software, and how to start up the system. Information on maintenance, troubleshooting and service are also included.

1-1 Architecture

From the programmer’s point of view, a complete system is made up as in “Figure 1.1 - Programming the sigmadue Control Unit” below:

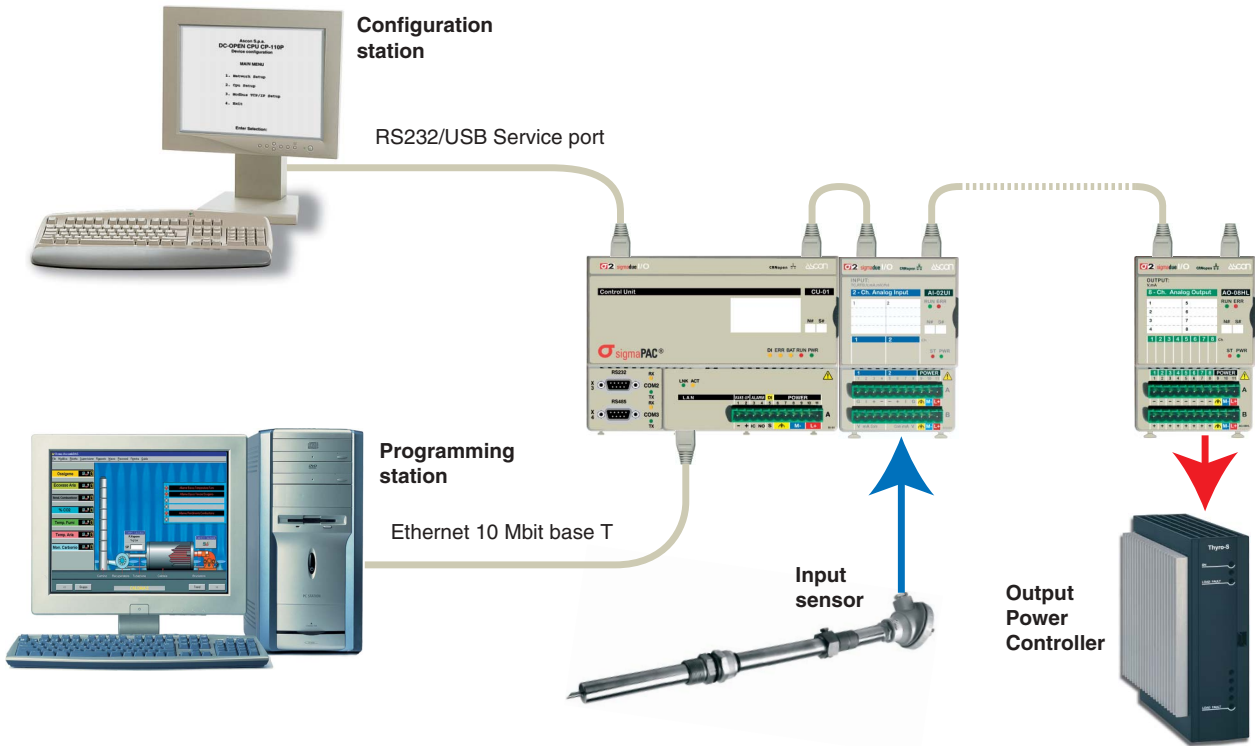


Figure 1.1 - Programming the sigmadue Control Unit

In “Figure 1.1 - Programming the sigmadue Control Unit” the VT100 terminal and the PC with OpenPCS are displayed as two different devices, but the user may want to use just one PC to run both OpenPCS and a VT100 emulator (e.g. Hyper Terminal).

1-1-1 Communication ports

The CPU has 3 fixed communication ports (see figure 2):

- The CAN port will be used for the connection, through a CANopen network, to the distributed I/O;
- The Ethernet port (TCP/IP) will be used for the connection, through a LAN network, to the PC with the Infoteam OpenPCS environment, for:
 - Programming, Debug and commissioning;
 - Modbus TCP data exchange;
- The Service RS232 port will be used to:
 - Connect a VT100 terminal to perform the configuration of the device;
 - Standard ASCII serial port;
 - Modbus RTU data exchange.

In addition to the three mentioned fixed ports, a plug in board can be added (see Ordering Codes), by which the communication capabilities are increased, e.g.:

- Two channels RS232/485 with Modbus RTU protocol (master or slave);
- Profibus DP (slave);
- CAN – CANopen (slave).

Pinout of all communication Ports are described hereafter and in the “CU02 Installation Manual” [6].

1-1-2 Auxiliary digital I/O

- DI** General Purpose Digital Input or RUN/STOP program functionality
- ALARM** General Fault Relay Output (IEC 61131 Watch Dog function);
- WAKE UP** Isolated General Purpose Digital Output (can be used, in conjunction with the Real Time Clock, for unattended applications).

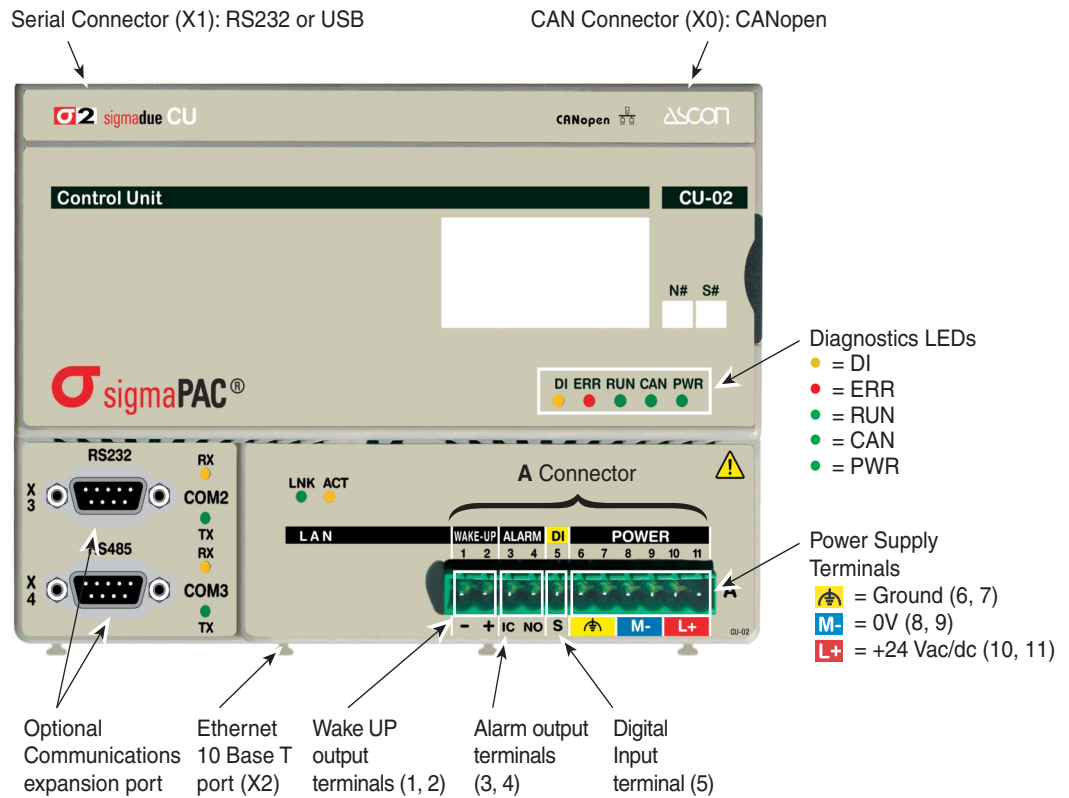


Figure 1.2 - Control Unit I/O and Communication Ports

1-1-3 Diagnostics LEDs

Referring to “Figure 1.2 - Control Unit I/O and Communication Ports” a description of the LEDs functions is given in the table below.

LED	Color	Action	Description
DI	Yellow	ON	Digital Input active
ERR	Red	ON	Error on CANopen network
RUN	Green	ON	Program running
		OFF	Program stop
		Flickering	Back-Up battery low
		Single flash	Configuration error, default set
		Blinking	Retain variables restore error
CAN	Green	ON/OFF	RUN LED for CANopen Network
PWR	Green	ON	Power Supply ON

Table 1.1 - Diagnostics LEDs description

Chapter 2

Installation

2-1 Mechanical installation

The **sigma**due Control Unit and the I/O modules are designed to be installed on standard DIN rails.

As the CPU has, on board, a CAN termination, it must be installed at one end of the CAN chain.

Up to 127 I/O modules can be connected in chain to each CPU. This value is the theoretical limit, Ascon spa recommends to never exceed the number of 32 units.

2-1-1 Installing modules and Removing modules

A complete description on how the modules can be mounted on or removed from a DIN Rail can be found in the “*Control Unit CU-02 Installation Manual*” [6].

2-2 Electrical installation

Refer to: “*Figure 1.2 -Control Unit I/O and Communication Ports*” “*Control Unit CU-02 Installation Manual*” [6] for details.

2-2-1 Connect the communication cables

CANopen remote I/O Port For CANopen I/O modules connection (**X0**). I/O modules are connected with the included cables in a daisy chain fashion. The RJ45 type connectors have the pinout:

Pin	1	2	3	4	5	6	7	8
Signal	CANH	CANL	CAN-GND	NC	NC	CAN-SHLD	CAN-GND	CAN-V+

Serial Port **RS232 service port (X1)**
The connector X1 on the CPU module is an RJ45 type, with the following pinout:

Pin	1	2	3	4	5	6	7	8
Signal	NC	NC	NC	GND	RX	TX	NC	NC

USB service port (X1)

When installed, the connector X1 on the Control Unit is a B type USB standard connector. The pinout of this cable is meaningless as the connection is standard.

Ethernet 10baseT For OpenPCS development station (**X2**). The connector on the CPU module is an RJ45 type, with the following pinout:

Pin	1	2	3	4	5	6	7	8
Signal	TX+	TX-	RX+	NC	NC	RX-	NC	NC

2-2-2 Connector “A” connections

Power supply Use the 6 poles on the right of the “A” connector and respect the polarity. Each of these terminals is doubled in order to allow the user to power, using an additional terminal block, other devices or sensors.

Pin	1	2	3	4	5	6	7	8	9	10	11
Name	-	+	IC	NO	S	FE	FE	M-	M-	L+	L+
Function	WAKE UP		ALARM		DI	F. EARTH		POWER SUPPLY			
Signal						FE	FE	0V	0V	+24V	+24V


 Power Supply

Auxiliary ports The 5 poles on the left of the “A” connector are auxiliary ports.

Pin	1	2	3	4	5	6	7	8	9	10	11
Name	-	+	IC	NO	S	FE	FE	M-	M-	L+	L+
Function	WAKE UP		ALARM		DI	F. EARTH		POWER SUPPLY			
Signal	COM	OUT	COM	OUT	INPUT	FE	FE	0V	0V	+24V	+24V


 Auxiliary ports

- Wake up** Software activated Digital Output. 24Vdc, 0.2A high side power switch, terminals 1 and 2;
- Alarm** Relay type digital output. SPST NO 24V, 1A, terminals 3 and 4;
- DI** 24Vdc digital Input, terminal 6. The return path can be linked to terminal M- (terminal 8 or 9) or to Wake-Up terminal (terminal 1).

Chapter 3

CPU setup

At start-up, the system starts a configuration session to perform the setup of the CPU devices. The user can insert the CPU setup data using a dumb VT100 terminal or a Personal Computer with Hyper Terminal program.

3-1 Connection of the CPU Setup Terminal

Depending on the CPU model, the X1 connector can be:

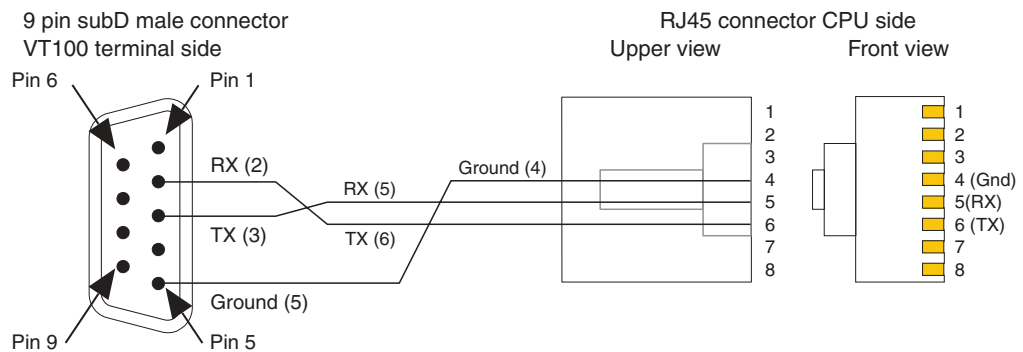
- RS232 communications protocol with RJ45 connector;
- Serial communications protocol with USB Type B connector.

In this way, depending on the terminal used to setup the CPU, the user must:

- Provide the proper connection cable;
- Set the correct communications parameters.

3-1-1 RS232 Serial Communications Connection

In order to connect a VT100 terminal or a PC with Hyper Terminal program, install an RS232 cable having the following characteristics:



Setting the communications parameters

At this point the user must configure the HyperTerminal in order to communicate with the correct COM Serial port. The number of the COM port linked to the USB connector can be found in:

Start\ControlPanel\System\Hardware\Peripherals\Ports (COM and LPT)

Using the COM port number open a new session of HyperTerminal and set the default communication parameters for the service port:

Baud rate	9600
Data	8bit
Stop bit	1
Parity	None
Flow Control	None

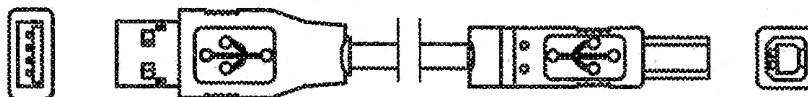
3-1-2 USB Serial Communications Connection

Installing the cable

In order to connect a Personal Computer using the USB (optional) connection, install an USB standard cable having an USB type "B" connector (CPU side) and an USB type "A" connector (PC side). This type of cable is standard for the USB connections and the installation is easy as each connector has only one insertion versus.

PC side
USB Type A Connector

CPU side
USB Type B Connector



Installing the USB driver

1. In Internet at the address:
<http://www.ftdichip.com/Drivers/VCP.htm>
locate the FT232B device and download the latest driver for the Operating System installed on the PC.
2. Connect the USB cable between the CPU and the PC.
3. Install the 2 drivers as explained in the installation manual, first the one of the USB device, then the driver that links the USB port to a COM port in the Personal Computer.

Setting the communications parameters

Once connected the CPU to the PC with the USB cable, the user must configure the HyperTerminal in order to communicate with the USB port. The number of the COM port linked to the USB connector can be found in:

Start\ControlPanel\System\Hardware\Peripherals\Ports (COM and LPT)

(locate the "USB to COM #" entry). Using the COM port number open a new session of HyperTerminal and set the default communication parameters for the service port:

Baud rate	9600
Data	8bit
Stop bit	1
Parity	None
Flow Control	None

3-1-3 Setting the Communications Parameters of the CPU RS232 Service Port

The default configuration for the Service RS232 port is:

Baud rate	9600
Data	8bit
Stop bit	1
Parity	None
Flow Control	None

During the configuration session it will be possible to change the baudrate, stop bit and parity. When the communications parameters of the CPU are changed, the communications parameters of the terminal (or PC) must be changed accordingly. The setup is performed by browsing the menus sent to the VT100 terminal or to the terminal emulation program (HyperTerminal) by the CPU.

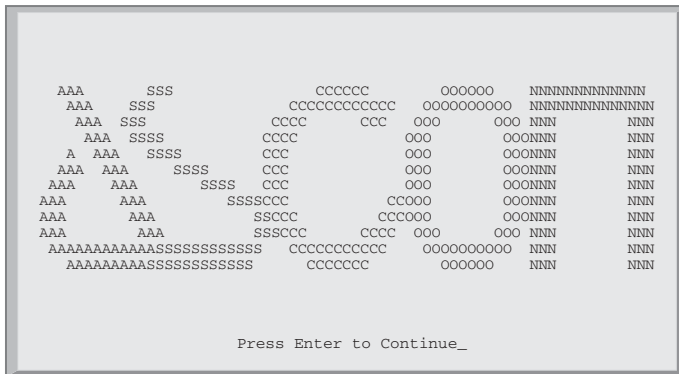
3-1-4 Entering the Setup Menu

The two types of CPU (RS232 and USB) have activation modes of CPU setup program that differ for few actions.

- For a RS232 service port CPU, it is enough to run the HyperTerminal program using the correct configuration file and pressing the connect button.
- In case an USB service port CPU, after having installed and configured the USB driver and HyperTerminal, the user must:
 1. Run the HyperTerminal program using the correct configuration file;
 2. Power on the **sigmadue** CPU;
 3. Wait for the audio notification that means that the Personal Computer has recognized and installed the “USB to COM” Driver;
 4. Press the connect button (⌘).

Accessing the Main Menu

This procedure is valid for both the types of CPU (RS232 and USB). To start the setup session, press the ENTER (the PC sends a CR character to the CPU) key on the setup terminal **while CAN and ERR LEDs are blinking on the CPU**. If the character CR is not sent before a predefined time (start-up timeout) the system ends the configuration session and starts the PLC application. In this chapter some templates of a configuration session made with Windows Hyper Terminal are shown. After the reception of the first CR character, the welcome screen appears.



Press ENTER again to reach the configuration session Main Menu.

Main Menu

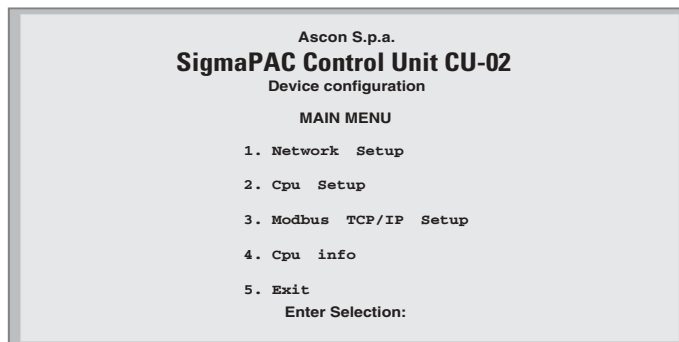


Figure 3.1 - CPU configuration Main Menu

Please note that the system has a further timeout that controls the life of the configuration session; this is the **inactivity** timeout. If the user does not work with the console for a time greater than this timeout, the configuration session will be automatically stopped and the PLC application will be started.

Both the described timeouts can be set during the configuration. The user should not set too short timeouts, thus preventing the possibility to work with the configuration console. To select an item of a menu or to insert a value for a parameter, the user has to type the corresponding number and then press ENTER.

3-2 Main Menu

As in *Figure 3.1 - CPU configuration Main Menu*, the Main menu has four sub menu selections:

- Network Setup:** To set the parameters of all the communication ports in the CPU;
- CPU Setup:** To set some parameter of the CPU;
- Modbus TCP/IP Setup:** Where the user can set the “*priority connection pool*” and the “*security address pool*”. Moreover the user can set the number of messages per cycle and the “*broken connection timeout*”.
- CPU info:** To see the release values of the FW, HW of the actual CPU;
- Exit:** To exit this menu and end the configuration session.

3-2-1 Network Setup Menu

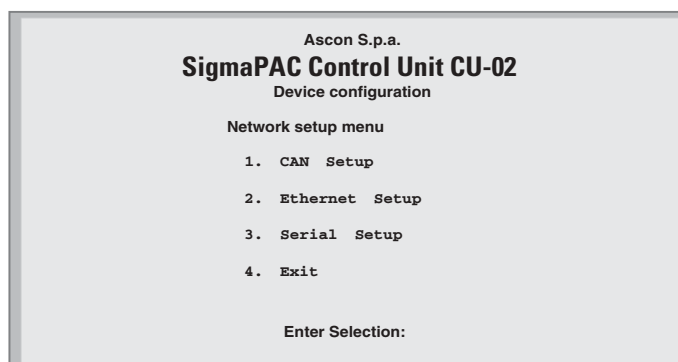


Figure 3.2 - Network Setup Menu

- CAN Setup:** To set the parameters for the CAN port;
- Ethernet Setup:** To set the parameters for the Ethernet port;
- Serial Setup:** To set the parameters for the RS232 port;
- Exit:** To exit this menu and return to the previous menu.

3-2-2 CPU Setup Menu

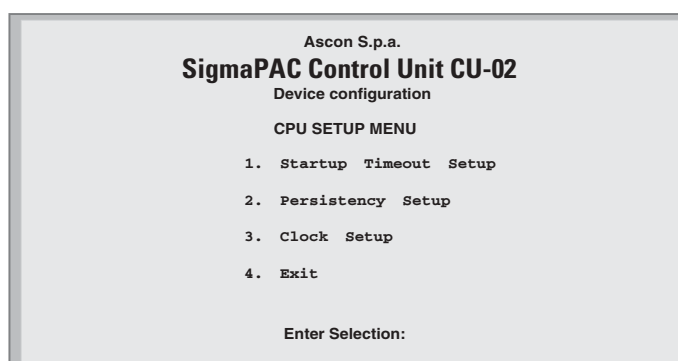


Figure 3.3 - Figure 5 - CPU Setup Menu

- Startup Timeout Setup:** To set the startup timeouts;
- Persistency Setup:** To set the parameters that control the saving of PLC program in the retentive memory;
- Setup CLOCK:** To set the parameters of the CPU real time clock;
- Exit:** To exit this menu and return to the previous menu.

3-2-3 CAN Setup Menu

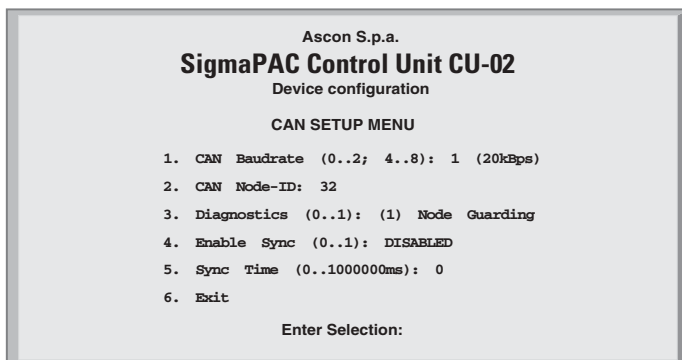


Figure 3.4 - Figure 6 - CAN Setup Menu

CAN Baudrate: To set the baud rate for the CAN network. The correspondence between the baud rate and the number of this item is indicated in Table 3.1 - CAN Network speed (note).

VALUE	0	1	2	4	5	6	7	8
Speed kbps	10	20	50	125	250	500	800	1000

Table 3.1 - CAN Network speed

CAN node ID: To set the Node-ID of the CPU in the CAN network;

Diagnostic: It is possible to work with Node Guarding protocol (default) that allows the CPU to receive a message from every node that is in the network or it is possible to select the nodeguarding protocol (1) in order to set the CPU to send and receive an “Alive message” from every node of the network and let the CPU and the nodes to understand if they are working well or there is a problem.

Enable Sync: It is possible to set the Sync communications (process data objects on the CAN network are exchanged when a sync message occurs).

Sync time: Generation time in millisecond of the sync message.

Exit: To exit this menu and return to the previous menu.

To change the value of an item the user must select the item number pressing the corresponding item digit on the keyboard and press ENTER. The screen will then change, asking the user to “Insert new value”.

Note: Value 0 (10kbps) is not currently supported by sigma**due** I/O modules.

3-2-4 CPU Info Menu

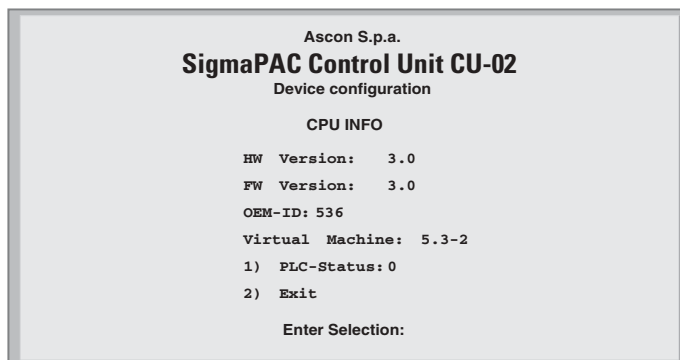


Figure 3.5 - CPU Info

HW version: Revision of the CPU Hardware;

FW version: Revision of the CPU Firmware;

OEM ID: ASCON code for the runtime Software;

V.MACHINE: Version of the runtime Software (5-3-2)

PLC-Status: In this field is pointed out the CPU status:

VALUE	Meaning
0	Normal status
1	Data configuration error
2	Retain error
3	Data configuration error + Retain error
4	Battery low
5	Battery low + Data configuration error
6	Battery low + Retain error
7	Battery low + Retain error + Data configuration error

Table 3.2 - Error codes that can be displayed in "CPU Info" screen.

Entering 1 and pressing the return key, the user acknowledges the alarms active displayed by "CPU Info" screen.

Exit: To Exit this menu and return to the previous menu.

3-2-5 ETHERNET Setup Menu

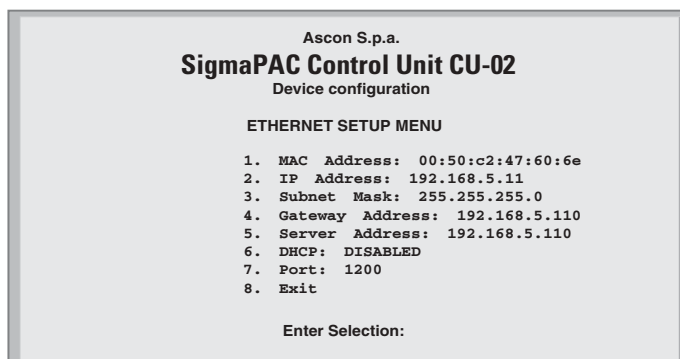


Figure 3.6 - Ethernet Setup Menu

MAC Address: To display the MAC address;

IP Address: To set the IP Address of the device;

Subnet Mask: To set the subnet mask of the device;

- Gateway Address:** To set the Gateway Address of the device;
- Server Address:** To set the Server Address of the device;
- DHCP:** To enable or disable DHCP Client on the device;
- Port:** To set the Port for the connection with OpenPCS;
- Exit:** To exit this menu and return to the previous one.

To set items 2, 3, 4 and 5, the user must digit on the keyboard the menu item number and press ENTER. The screen will then change, asking the user to “insert new value.”. When the system displays the “insert new value.” message the user can enter the new values in number and dot notation.

To set DHCP value select item 6 and set 0 to DISABLE or 1 to ENABLE. To set the Port, select item 7 and enter the desired value.

WARNING Please note that items 2, 4 and 5 **MUST** have the same subnet in order to avoid communications problems.

3-2-6 Serial Setup Menu

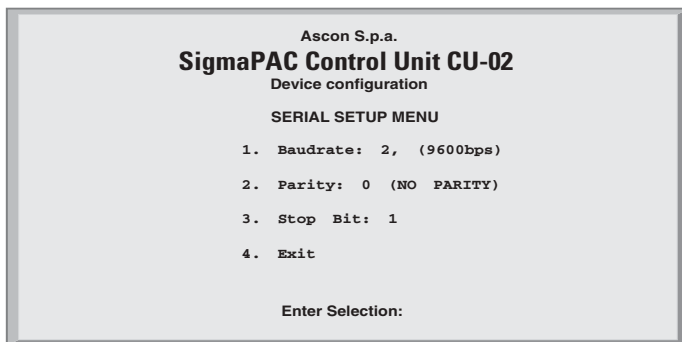


Figure 3.7 - Serial Setup Menu

Baudrate: This choice allows the user to set the baud rate for the RS232 communications port. The correspondence between the baud rate and the item number is specified in Table 3.3 - Serial Port Speed:

VALUE	0	1	2	3	4	5	6	7
Speed bps	2400	4800	9600	19200	38400	57600	115200	230400

Table 3.3 - Serial Port Speed

Parity: To set the parity for the RS232 communication port, according to Table 3.4 - Parity;

VALUE	0	1	2
Parity	NONE	EVEN	ODD

Table 3.4 - Parity

Stop Bit: To set the number of stop bits for the RS232 communications. Valid values are 1 or 2;

Exit: To exit this menu and return to the previous one.

To change the value of an item, the user has to select the item number and press ENTER. The screen will then change, asking the user to “Insert new value.”.

3-2-7 CPU Setup Menu

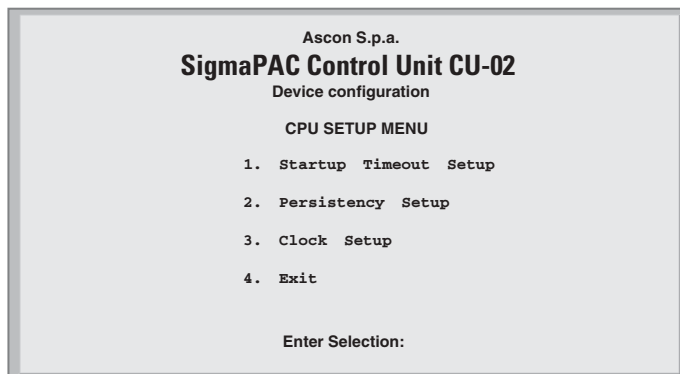


Figure 3.8 - CPU Setup Menu

Startup Timeout Setup: To set the startup timeouts;

Persistency Setup: To set the parameters that control the saving of PLC program in the retentive memory;

Setup CLOCK: To set the parameters of the CPU real time clock;

Exit: To exit this menu and return to the previous menu.

3-2-8 STARTUP Setup Menu

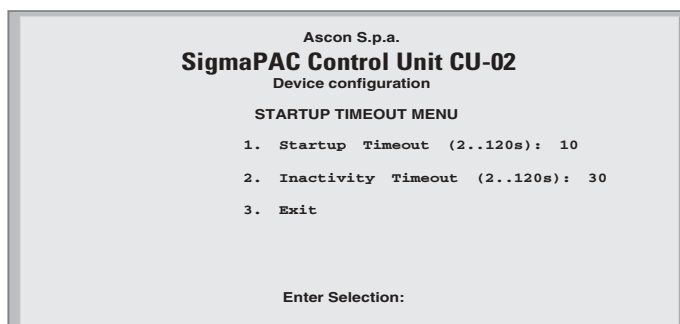


Figure 3.9 - Startup Setup Menu

Startup Timeout: To set the Startup Timeout;

Inactivity Timeout: To set the Inactivity Timeout;

Exit: To exit this menu and return to the previous one.

To change the value of an item, the user has to select the item number and press ENTER. The screen will then change, asking the user to “insert new value.”.

3-2-9 Persistency Setup Menu

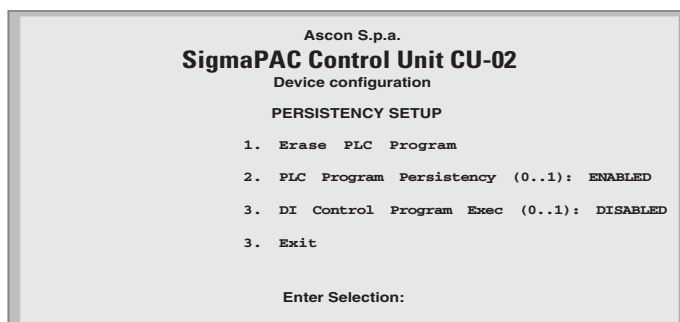


Figure 3.10 - Persistency Setup Menu

The CPU is able to save a PLC program in persistent memory. This means that, when PLC Program Persistency is *ENABLED*, the program will be automatically loaded and executed at start-up.

Every time the user, during the development activities, downloads a new program to the CPU, this is saved in the persistent memory so, at next device start up, the last downloaded program will be executed.

Saving a program in persistent memory is a time consuming activity. This wait time can be annoying during program development and debugging. For that reason the user may want to disable the automatic program save in persistent memory, making development activities more efficient.

Sometimes can be useful to prevent executing any program at startup time. Selecting the item “Erase PLC program” the retentive memory area reserved to store PLC programs is erased. This activity take some seconds. When the “Persistence setup menu” screen reappears then the memory has been erased.

Erase PLC Program:

Selecting the item “Erase PLC program” the retentive Memory area reserved to store PLC programs is erased;

PLC Program Persistency (0..1):

The item “PLC program persistency” allows the user to configure the program store memory to be retentive or volatile memory;

DI Control Program Exec (0..1):

The Digital Input Control Program Exec can be used as a generic input addressed as % \pm x0.0 (default) or can be set as a START (1) or STOP (0) contact for the actual program that is downloaded on the CPU.

Exit: To exit this menu and return to the previous one.

3-2-10 CLOCK Setup Menu

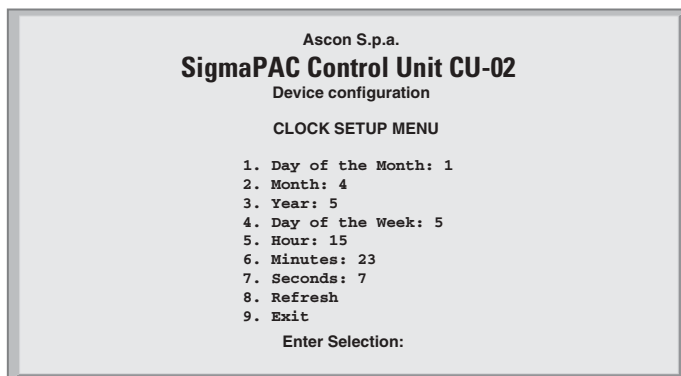


Figure 3.11 - Clock Setup

3-2-11 Modbus TCP/IP Setup

Selecting item 3 on the Main Menu you will arrive at the following menu:

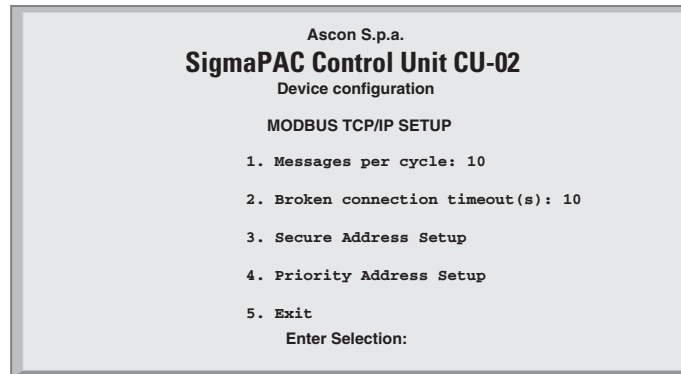


Figure 3.12 - Modbus TCP/IP Setup Menu

Messages per Cycle:

By the first item the user can insert the number of messages processed during each cycle. The inserted value must be comprised between 1 and 50.

Broken Connection Timeout (s):

By the second item you can set the inactivity timeout of a TCP/IP connection (in seconds). The inserted value must be comprised between 10 and 5400. To verify the connection state after a long period of inactivity, the TCP/IP “keepalive” protocol is used. The protocol performs in sequence the following steps:

1. At each received messages the timeout is zeroed;
2. In the case that the programmed timeout is reached, a “probe” message is sent in order to verify if the connection is still active;
3. If an answer to the “probe” is received, then the timeout is zeroed.
4. In case of no answer, the “probe” will be sent again three times, every 10 seconds.
5. After the fourth “probe” has got no answer the connection will be closed.

Secure Address Setup:

Selecting this item a new window will appear displaying the menu called “Secure Address Protocol”(see next);

Exit: exit this menu and return to the previous menu.

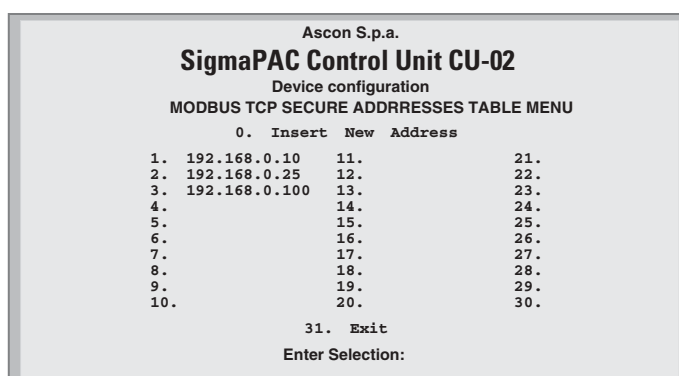
3-2-12 Modbus TC/IP Secure ADDR S Table Menu

Figure 3.13 - Modbus TCP/IP Secure Address Table Menu

By this menu, in the case the security functions are enabled, the addresses that the Modbus TCP/IP Server can access are set out.

To insert a new address, select 0) first, then type in the new address; it will be inserted in the first free position.

To delete an address, select the number of the address you want to remove.

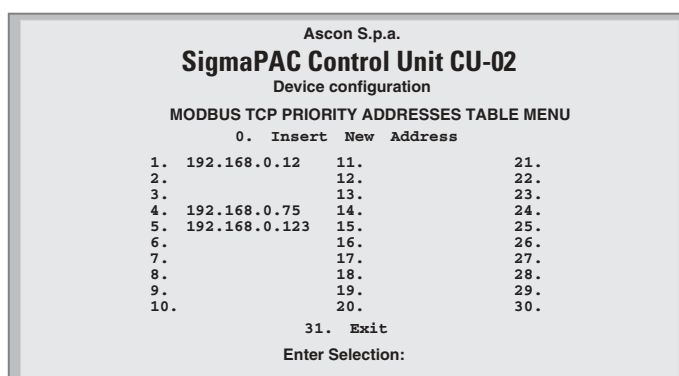
3-2-13 Modbus TC/IP Priority ADDR S Table Menu

Figure 3.14 - Modbus TCP/IP Secure Address Table Menu

The insertion rules are the same as described for the “security address pool”.

Addresses inserted in the “*priority connection pool*” are managed by the system in a privileged way. The Modbus TCP/IP server agent can maintain up to 10 TCP connections at the same time. When a new connection request arises and all available connections are engaged, the system shall make a choice.

Since every new request must be satisfied, one of the present active connections shall be closed.

The first candidates that are to be closed are the addresses not belonging to the “*priority connection pool*”. The second choice is to close the connection not active for the greater amount of time.

Chapter 4

Programming the CPU

4-1 Installing OpenPCS

4-1-1 Hardware and Software Requirements

As a programming system, you will need an IBM compatible PC with at least a Pentium microprocessor (we recommend a Pentium 4 with 1GHz of clock frequency) and a CD-ROM-drive; a hard disk drive with at least 100Mbytes of free space; a minimum total amount of 512Mbytes (recommended) of memory, a high-resolution graphics card and an ethernet 10 baseT ethernet adapter. Besides OpenPCS, you will need an operating system, which can be Windows 2000 or Windows XP and Windows Server 2003.

4-1-2 Installation

OpenPCS is delivered on CD-Rom. The CD auto-starts a screen where you can select the software you want to install. If auto-start is not activated or does not work, please start the **PS544P.EXE** from the subdirectory:

```
X:\SETUP\
```

Where X: is the letter assigned to the CD-ROM drive in your PC.

When installing OpenPCS, you will be asked to enter your licence information. If you do not have a licence, just keep the serial number and key fields empty. Without a licence OpenPCS is still full functional, but restricted to the "SIMULATION". Notice that in Simulation mode a different target should be selected as "HW modules" and it is not possible to use many of the function blocks available in the ASCON libraries.

4-1-3 Starting OpenPCS

Start Windows and choose:

Start → Programs → infoteam OpenPCS 2006 → infoteam OpenPCS 2006
in the start-menu; this will open the ControlX-Framework.

4-1-4 Configuring OpenPCS

Before you can start programming with OpenPCS you should configure it, in order to work with the ASCON CPU target. A **.cab** file must be installed into OpenPCS. The file **ascon_OPCS54_HWvvvxx_LIByy_HELPzz.cab** contains a series of files describing Ascon **sigmadue** Hardware, drivers, examples and utilities (vv, xx, yy and zz are digit to identify the software version)

In the OpenPCS “Extras” menu, select “tools – Driver install...”. “Select” the desired cabinet (e.g. ascon_OPCS54_HW3030_LIB01.cab), then “Install”.

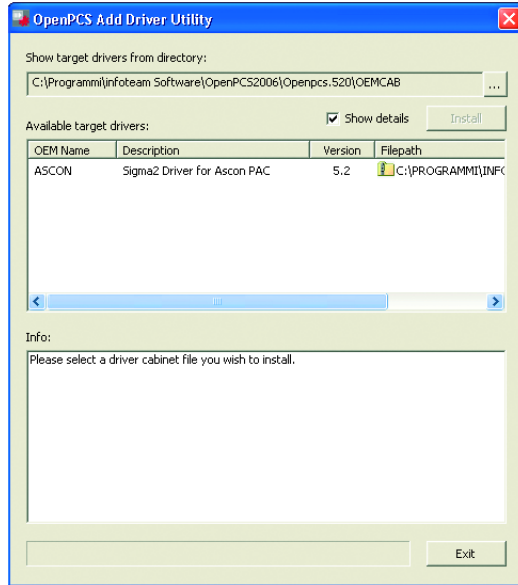


Figure 4.1 - OpenPCS OEM Driver Installation

4-2 OpenPCS Setup

To connect the OpenPCS development system to the Ascon target, a new connection must be defined.

Select “Connections...” item in the “PLC” menu. In the window of *OpenPCS Connection Setup* select “New”.

Now in the window “Edit connection” it is possible to set the new connection. In the field “Name” you can write the reference name of the new connection.

Pushing the “Select” button it is possible to pick the driver that manage the communication with the target, for Ascon CPU is TCP52.

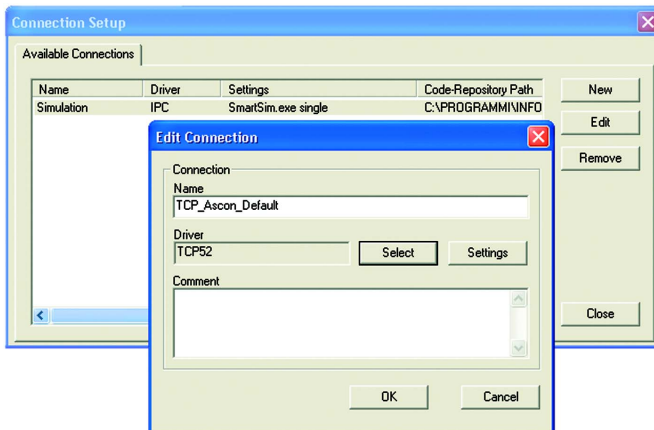


Figure 4.2 - OpenPCS Connection Setup

Now, clicking on the “Settings” button it is possible to set the communication parameters.

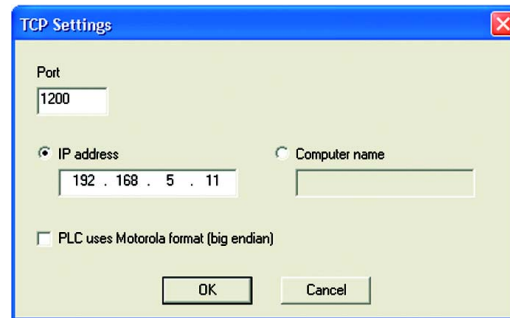


Figure 4.3 - TCP Settings

The Port number and IP address must be the same configured at the initial CPU configuration session. See the Ethernet setup menu, items 7 and 2.

OpenPCS environment is now ready to communicate with the Ascon target. To use the CPU is mandatory to set up the project.

Select the “Resource Properties” item in the PLC menu, set “Ascon...” in the “Hardware Module” field and the newly created TCP connection in the “Network Connection” field.

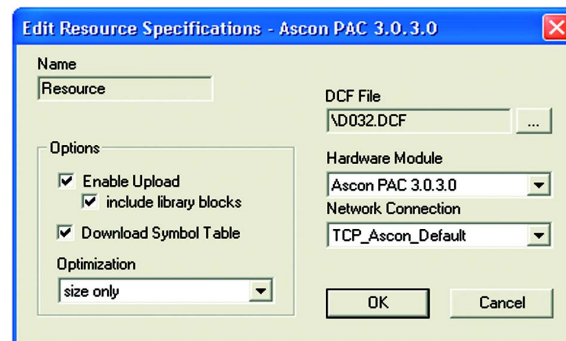


Figure 4.4 - OpenPCS resource Specifications

OpenPCS supports uploading of projects from your controller. To enable this feature, the “enable upload” box has to be checked when compiling a resource.

The code “Optimisation” menu allows for three choices of compilation:

“Normal” and “Speed only” refers to the NCC: Native Code Compilation, while “Size only” refers to the standard code.

Please note that the use of NCC doesn’t permit to insert break points in debugging projects.

Setup Communication Timeout

Depending on several reasons it may be necessary to set the communication timeout on Ethernet Port to values higher than the default value. This timeout checks the dialogue between OpenPCS and the target CPU. If you are going to deal with large programs, the compilation time may be excessively long. The default value of 20000ms can be increased at registry key:

```
[HKEY_LOCAL_MACHINE\SOFTWARE\infoteam Software GmbH\
OpenPCS\5.4.4\Online\TcpDriverTimeout_ms]
```

Value = "20000" means a timeout of 20 seconds.

4-3 Software Utilities

4-3-1 OPC Server

An OPC Server is available onto OpenPCS programming suite. In order to have access to the OPC services, the OpenPCS complete suite should be installed on the PC used for data exchange.

OPC means OLE for Process Control and is a series of standards specifications created by the OPC Foundation.

OpenPCS currently supports the Data Access Specification (OPC-DA) Version 2.0. For further information on OPC, please consult the web page of the OPC Foundation at:

<http://www.opcfoundation.org/>

The OPC server will take all information regarding OPC tags and communication information from a database. To use OPC, you have to do nothing. The database is automatically created with each compilation from the resource global variables. This database can be found at:

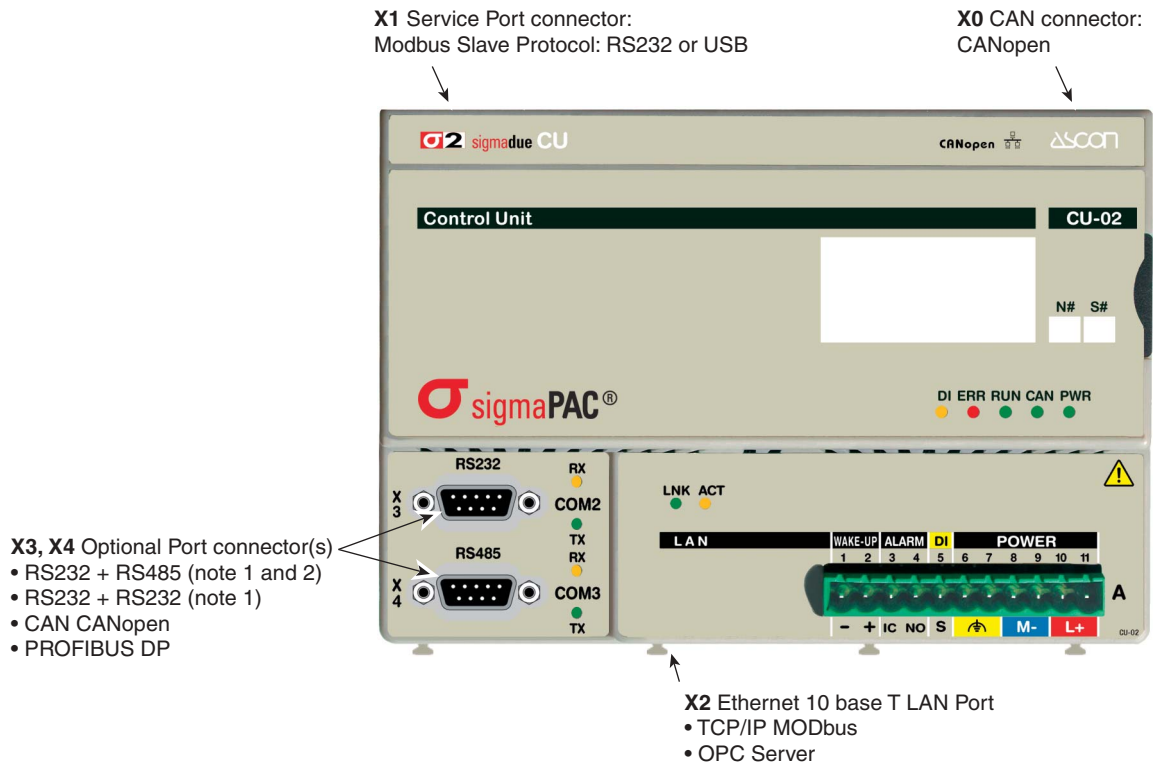
`<project root directory>\ENV\RESOURECE\OpcSvr.mdb`

It is recommend not to change that file.

4-4 Communication Ports Protocols

sigmadue CPU has various communication ports and protocols. The combinations of ports and protocols are shown below:

Figure 4.5 - Communication Ports Protocols



- Notes:**
1. Modbus Master/Slave
 2. Consult the Installation Guide to polarise and terminate the RS485 port.

4-5 Auxiliary digital port

The auxiliary digital port will be available for a PLC project, provided that the resource is mapped on memory area that the project can see. The port is mapped as follows:

Port	Mapping
WAKE-UP output	%QX0.0
Alarm Output	%QX0.1
General purpose digital input	%IX0.0

4-6 Watchdog Timer

Ascon CU-02 CPU contain a watchdog control, controlled by 2 specific FBs. Watchdog is fundamentally a down counter, decremented in 100ms intervals. When the count value reaches zero, two different behaviours of the system may occur, depending on how the configuration is:

- PLC program keeps working, stores the event and force the Alarm relay to OPEN;
- PLC program performs a Reset and starts execution again.

Please note that the Watchdog timer is controlled by FB but it runs independently of the PLC program. Therefore, if the program is stopped, e.g. during a debug session, the timer keeps running, and behaves as programmed when the count reaches zero.

During debug sessions it is advisable to maintain the Watchdog function disabled.

4-7 CANopen Extension for Ascon sigmaDUE CPU

4-7-1 Introduction

sigmaDUE is a system based on two main concepts: the CANopen technology and the IEC61131 standard languages. The integration of these two different worlds is performed by:

- Use of networked variables;
- Direct access to CANopen parameters and functions via predefined low level communication function blocks. CANopen services for CPU programs according to the IEC61131-3 standard are defined in the CiA (CAN in Automation e.V.) Draft Standard 405;
- Use of Ascon IO Library.

Using Networked Variables

Networked variables are the easiest way of data exchange in a CANopen network system. Within the CPU, program access to the network variables occurs in the same way as access to internal, local variables on the CPU. From the point of view of a CPU programmer it is unimportant whether a input variable is assigned to a local input on the CPU device or to an input on a networked expansion device. The use of networked variables only requires basic knowledge of CANopen. In general, a CANopen configuration tool as well as the availability of EDS files for the individual CANopen devices are required for integrating network variables into a CPU.

With the help of network variables it is possible:

- to expand the number of inputs and outputs on the PLC using distributed CANopen I/O devices;
- to exchange process data between various control units, thus realizing decentralized automation control projects;

- to integrate other special CANopen devices from third party vendors into a complex control project and furthermore to build very specific automation control systems using modular components in addition to Ascon sigma^{due} CANopen IO modules.

For a detailed description see [3] and [4].

*Using
CANopen
Function blocks*

CANopen function blocks enable direct access to specific CANopen services, thus offering a high degree of flexibility in the target application. Furthermore, using these function blocks does not require an additional CANopen configuration tool or EDS files. However, using the CANopen function blocks assumes that the user has detailed knowledge about CANopen and its services.

With the help of CANopen function blocks it is possible:

- to directly exchange data with other CANopen nodes via SDO (Service Data Object) or PDO (Process Data Object);
- to enquire and change the state of other CANopen nodes;
- to receive error messages from other CANopen nodes;
- to allow generation of SYNC messages.

For a detailed description see [3] and [4].

*Using
Ascon I/O
Library*

The function blocks present in the Ascon IO Library enable the access to Ascon sigma^{due} CANopen IO modules, providing services that allow the CPU programmer to do not deal with the fieldbus directly. To provide this level of abstraction, the function blocks are based on those described above.

With the help of the function blocks present in the library is possible:

- to directly exchange data with all sigma^{due} CANopen module;
- to setup all the module's functionalities;
- to enquire and see the state of the modules;
- to reset the module.

For a detailed description see [11] and [12].

Chapter 5

Ascon Function Blocks Libraries

In this chapter are listed all the libraries present in the Ascon installation of the OpenPCS programming tool, and all the function blocks present in the firmware of the CU-02 device. For each library is also indicated the complete list of the function blocks with a little description. For more details please refer to the specific dedicated documentation.

5-1 AsconACLib

The *AsconACLib* is a function block library that contains a set of generic functionalities that come from the Ascon AC Station Device useful for the IEC 61131 programming (see the “*IEC 61131-3 Function Block Library*” [11] manual for details). The table here reported gives the complete list of the function blocks of the library.

Function Block name	Description
ALARM_ABS	Absolute Alarm Function Block
ALARM_ADVANCED	General Alarm Function Block
ALARM_BND	Band Alarm Function Block
ALARM_DEV	Deviation Alarm Function Block
ALARM_RATE	Rate Alarm Function Block
CHARACTERIZER_8	Linear Interpolation with 8 points
CHARACTERIZER_16	Linear Interpolation with 16 points
COMPARATOR	Comparator with hysteresis Function Block
CONV_AD8	From BYTE to 8 bits
CONV_AD16	From WORD to 8 bits
CONV_AD32	From DWORD to 8 bits
CONV_DA8	From bits to BYTE
CONV_DA16	From bits to WORD
CONV_DA32	From bits to DWORD
COUNTER	Rising Edge Counter
DECODER_8	Decoder Function Block
FLIPFLOP_D	D Type FlipFlop Function Block
FLIPFLOP_JK	JK Type FlipFlop Function Block
HOLD_VALUE	Sample & Hold Function Block
INBETWEEN	Middle Selector Function Block
LIMITER_VALUE	Limiter Function Block
MIN_MAX_SELECTOR	Min/Max Selector Function Block

Function Block name	Description
MONOSTABLE_DS	Monostable with Delay
MONOSTABLE_NED	Monostable with Delay on the Negative Edge
MONOSTABLE_PED	Monostable with Delay on the Positive Edge
MONOSTABLE_PUL	Monostable Pulse Generator
MUX_A8	Analog Multiplexer 8 Input
MUX_A16	Analog Multiplexer 16 Input
MUX_D8	Digital Multiplexer 8 Input
MUX_D16	Digital Multiplexer 16 Input
RESCALE	Rescaling Function Block
SLOPE_LIMIT	Slope Limiter
TOTALIZER	Totalizer Function Block

5-2 AsconBasicIOLib

The *AsconBasicIOLib* is a Function Block library that allows the *OpenPCS* programming environment to access di Ascon’s **sigmadue** devices.

These FBs free the user from controlling the communications details of CANopen¹ protocol. Using these FBs the user simply accesses the communications basic functions of each I/O module (see the “*IEC 61131-3 Function Block Library*” [11] manual for details).

A list of available I/O FBs follows:

bDI16LV	FB to interface the module DI-16LV
bDI32LV	FB to interface the module DI-32LV
bDO04RL	FB to interface the module DO-04RL
bDO08RL	FB to interface the module DO-08RL
bDO04TX	FB to interface the module DO-04TX
bDO16TS	FB to interface the module DO-16TS
bDO16TP	FB to interface the module DO-16TP
bDO32TS	FB to interface the module DO-32TS
bDM08TS	FB to interface the module DM-08TS
bDM16TS	FB to interface the module DM-16TS
bDM32TS	FB to interface the module DM-32TS
bAI02UI	FB to interface the module AI-02UI
bAI04RT	FB to interface the module AI-04RT
bAI08TC	FB to interface the module AI-08TC
bAI08HL	FB to interface the module AI-08HL
bAI08DP	FB to interface the module AI-08DP
bAO08HL	FB to interface the module AO-08HL
bAO08DP	FB to interface the module AO-08DP
bERRORSTATEAN	FB to manage the communications error statuses for analogue output modules
bERRORSTATEDIG	FB to manage the communications error statuses for digital output modules

5-3 AsconControllib

The *AsconControllib* is a function block library dedicated to the process control. It uses the basic functionalities dedicated to the PID implementation present in the firmware of the control unit (CU-02) device in order to provide solution ready to use. In fact in the library there is the implementation of a complete standard regulator in both versions: single action and double action for heat and cool application. Please note that are present also different function blocks dedicated to the tuning algorithms in both version “Step Response” and “Natural Frequency”.

The table here reported gives the complete list of the function blocks of the library (see the “IEC 61131-3 Function Block Library” [11] manual for details).

S2_CONTROLLER	Single Action Controller
S2_FILTER	First Order Filter
S2_HC_CONTROLLER	Heat and Cool Controller
S2_HC_TFUZZY	Tuning with Fuzzy Logic for Heat and Cool Loops
S2_HC_TNATFREQ	Tuning with Natural Frequency Algorithm for Heat and Cool Loops
S2_HC_TSTEPRESP	Tuning with Step Response Algorithm for Heat and Cool Loops
S2_TFUZZY	Tuning with Fuzzy Logic for Single Action Loops
S2_THHA	Tuning with Modified Step Response Algorithm for Single Action Loops
S2_TNATFREQ	Tuning with Natural Frequency Algorithm for Single Action Loops
S2_TSTEPRESP	Tuning with Step Response Algorithm for Single Action Loops

5-4 AsconCPULib

The *AsconCPULib* is a function block library that allows the access to the control unit (CU-02) device of the Ascon **sigma**due line, from the OpenPCS programming tool. These FBs allow the user to set and manage the CANopen network activities: diagnostic, failure management of the connected devices, synchronization,...

The table here reported gives the complete list of the function blocks of the library. Please note that some of these must be considered as *system function blocks*: in fact these FBs implement particular functionalities dedicated to the global management of the CANopen network (see the “IEC 61131-3 Function Block Library” [11] manual for details).

Function Block name	Description
S2_CU02	Function block interface for the Control Unit Module
SPLIT_ENABLE	Extract the enable signal from the Network connection of the modules
SET_TT [note]	Set the communication type of a CANopen node
SET_TT_MODULE [note]	Set the transmission type parameters of all PDOs of a device
RECOGNIZESIGMAIO [note]	Recognize the module name of a device coming from the sigma due IO line

ï ï ï ï These are system Function Blocks

5-5 AsconMBCommLib

The *AsconMBCommLib* is a Function Block library that allows a simplified access to the communications port of Ascon’s CU-02 **sigmaDue** CPU (see the “*IEC 61131-3 Function Block Library*” [11] manual for details). A list of FBs available in the library follows:

MB_MST_RD_COIL	Modbus Master: Read Coil
MB_MST_WR_COIL	Modbus Master: Write Coil
MB_MST_SYNC	Modbus Master: Synchronization
MB_MST_RD_WORD	Modbus Master: Read Word
MB_MST_WR_WORD	Modbus Master: Write Word
MB_SLV_RD8_DWORD	Modbus Slave: Read 8 DWORD values
MB_SLV_RD8_REAL	Modbus Slave: Read 8 REAL values
MB_SLV_RD16_WORD	Modbus Slave: Read 16 WORD values
MB_SLV_RD32_DIGITAL	Modbus Slave: Read 32 digital values
MB_SLV_RD_DIGITAL	Modbus Slave: Read 1 digital value
MB_SLV_RD_DWORD	Modbus Slave: Read 1 DWORD value
MB_SLV_RD_REAL	Modbus Slave: Read 1 REAL value
MB_SLV_RD_WORD	Modbus Slave: Read 1 WORD value
MB_SLV_WR8_DWORD	Modbus Slave: Write 8 DWORD values
MB_SLV_WR8_REAL	Modbus Slave: Write 8 REAL values
MB_SLV_WR16_WORD	Modbus Slave: Write 16 WORD values
MB_SLV_WR32_DIGITAL	Modbus Slave: Write 32 digital values
MB_SLV_WR_DIGITAL	Modbus Slave: Write 1 digital value
MB_SLV_WR_DWORD	Modbus Slave: Write 1 DWORD value
MB_SLV_WR_REAL	Modbus Slave: Write 1 REAL value
MB_SLV_WR_WORD	Modbus Slave: Write 1 WORD value
SERIAL_PORTS	Set the configuration for the ModbusRTU ports
TCP_IP_PORT	Set the configuration for the ModbusTCP port

5-6 AsconLibrary

The *AsconLibrary* controls all the functions provided by the I/O modules of the **sigmaDue** series. It masks the fieldbus communications to and from the modules so that the user does not need to deal with the fieldbus directly: from explicit use of the protocol messages (SDO, PDO, EMCY, SYNC, ...) to the use of the configuration files such as EDS and DCF (see the “*I/O Function Block Library*” [12] manual for details). The table here reported gives the complete list of the function blocks of the library.

Operator Panel with CANopen interface (slave)	WRITE_OP	Transfer from PLC and display a value on OP
	READ_OP	Transfer a value from OP to CPU
	UPDATE_OP	Keep updated a local copy of OP database
DI-16LV	DI_16LV_STD	Transfer 16 discrete inputs states from module to CPU
	DI_16LV_LTH_TIME	Manage the Input special functions of the module: <ul style="list-style-type: none"> • Latched Inputs • Monostable Inputs
	DI_32LV_STD	Transfer 32 discrete input states from module to CPU

DO-04RL	DO_04RL_STD	Transfer 4 relay Outputs from CPU to the module
	DO_04RL_PULSE	Manage the Output special functions of the module: • Pulse Output
DO-04TX	DO_04TX_STD	Transfer 4 discrete Outputs from CPU to the module
	DO_04TX_PULSE	Manage the Output special functions of module: • Pulse Output
DO-08RL	DO_08RL_STD	Transfer 8 relay Outputs from CPU to the module
	DO_08RL_PULSE	Manage the Output special functions of the module: • Pulse Output
DO-16TS	DO_16TS_STD	Transfer 16 discrete Outputs from CPU to the module
	DO_16TS_PULSE	Manage the Output special functions of module: • Pulse Output
DO-16TP	DO_16TP_STD	Transfer 16 discrete Outputs from CPU to the module
	DO_16TP_PULSE	Manage the Output special functions of module: • Pulse Output
DO-32TS	DO_32TS_STD	Transfer 32 discrete Outputs from CPU to the module
AI-02UI	AI_02UI_STD	Transfer 2 analogue Input from module to CPU
	AI_02UI_RESCALE	Scale and Transfer 2 linear analogue Inputs from module to CPU
AI-08HL	AI_08HL_STD	Transfer 8 analogue Input from module to CPU
AO-08HL	AO_08HL_FAST	Transfer 8 analogue Output from CPU to module in FAST mode
	AO_08HL_ENHANCED	Transfer 8 analogue Output from CPU to module in ENHANCED mode
	AO_08HL_RAMP	Manage the generation of 8 “ramp” type analogue Outputs
	AO_08HL_LINEARIZATION	Manage the “Linearization Table” of 8 custom analogue Outputs
	AO_08HL_RESCALE	Scale and Transfer 8 linear analogue Outputs from CPU to module
	AO_08HL_FAST_ENHANCED	Select command for FAST / ENHANCED working mode of the module
DM-08TS	DM_08TS_STD	Select I/O channels and transfer discrete Input states from module to CPU and discrete Outputs from CPU to the module
	DM_08TS_PWM_PULSE	Manage the generation of “PWM” AND pulse on ch # 3 and 4
	DM_08TS_LTH_TIME	Manage the Input special functions of the module: • Latched Inputs • Monostable Inputs
	DM_08TS_FREQ_COUNT_PERIOD	Manage the Input special functions on ch# 1 and 2 of the module: • Frequency input • Period measurement • Counter input
DM-16TS	DM_16TS_STD	Transfer 8 discrete inputs states from module to CPU and transfer 8 discrete Outputs from CPU to the module
DM-32TS	DM_32TS_STD	Transfer 16 discrete inputs states from module to CPU and transfer 16 discrete Outputs from CPU to the module
CAN MESSAGES	RPDO	Receive a PDO from the CANopen network
	WPDO	Send a PDO on the CANopen network

5-7 Firmware Function Blocks List

In this section are listed the firmware function blocks that are present on the CU-02 (hardware version 3.0.3.0). For each of the function block here reported a short description is provided (see the “*Ascon Firmware Function Block Library*” [10] manual for details): for more details please refer to the specific documentation.

OPEN_SERIAL_COMM	Configure the serial port and set the protocol used on it
MODBUS_SLAVE_SETTINGS	Set the node_id and timeout parameters of the MB slave agent
MODBUS_SLAVE_STATUS	Check the status of the MB agent
MODBUS_MASTER_EXECUTE	Execute a query in compliance with the MB protocol
MODBUS_MASTER_STATUS	Check the status of the MB agent.
MODBUS_GET_SLAVE_DATA	Read registers from a memory area dedicated to a MB slave
MODBUS_SET_WORD_DATA	Write registers to a memory area dedicated to a MB slave
MODBUS_SET_DWORD_DATA	Write two contiguous registers (4 bytes) to a memory area dedicated to a MB slave
MODBUS_GET_DIGITAL_SLAVE	Read 16 digital value from a memory area dedicated to a MB slave
MODBUS_SET_DIGITAL_SLAVE	Write 16 digital value to a memory area dedicated to a MB slave
CLOSE_SERIAL_COMM	Close the serial communication port
RTC_SETUP	Set the system clock
RTC_GET_VALUES	Read the system clock
WATCHDOG_SET	Configure the system watchdog
WATCHDOG_STATUS	Checking the status of the system watchdog
CTRL_PID	PID algorithm
CTRL_MV	Automan Station for single action regulation
CTRL_HCMV	Automan Station for heat and cool regulation
CTRL_SPLITMV	Automan Station for heat and cool regulation with split range
CTRL_SRV	Servomotors algorithm
CTRL_TPO	Time proportional output
MB_TCP_GET_CONN_BY_ADDR	Return information of a connection identified by the client IP address
ENABLE_MODBUS_TCP_SERVER	Set and activate the MBTCP/IP Server agent
CLOSE_MODBUS_TCP_SERVER	Disable MBTCP/IP Server
MB_TCP_CLOSE_CONN	Close one of the 10 active connections
MB_TCP_CONN_STATUS	Show the status of a MBTCP/IP connection
MB_TCP_GET_CONN_CONFIG	Return information of a connection
SERIAL_IO_CONFIG	Configure the ASCII serial port
SERIAL_IO_READ	Read data from the ASCII serial port
SERIAL_IO_WRITE	Write data on the ASCII serial port
RAND	Generete random numbers from 0 to 65535
ASCON_FLATTEN_TO_REAL	Convert the 4 bytes of the input parameters as the flatten equivalent of a real number which is then output-returned
ASCON_REAL_TO_FLATTEN	Convert the REAL variables in their FLATTEN equivalents

Chapter 6

Technical data

6-1 General conditions

Power supply	24Vdc –15...+25%
Power consumption	5W
Dimensions	L: 152, H: 110, W: 65 mm
Weight	400g
Isolation	3-way isolation 800Vpp (see diagram)

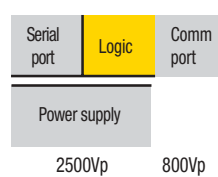


Figure 6.1 - CPU isolation diagram

6-2 Ambient conditions

Regulations	Developed according to EN 61131-2, VDE 0160, UL 508
Ambient temperature, operating	0...+55°C
Ambient temperature, storage/transport	-25...+85°C
Temperature cycles (speed of changing from positive-to-negative and vice versa)	0.5°K/min (no condensation)
Humidity, operating	75% on average; 85% occasionally (no condensation). Note: Ranging from 0°C to +55°C, appropriate measures must be taken against increased humidity (>85%)
Humidity, storage/transport	75% average; 85% occasionally. Note: For a short period, slight condensation may appear on the housing
Degree of protection according to IEC 60529	IP20
Degree of protection according to IEC 60536	Class 3
Housing material, basic	Plastic PVC-Free PA6 6, self-extinguishing (V0)
Degree of pollution according to EN 50178	2; condensation not permissible in operation
Surge voltage class	II (low-level signal); III (power level)

Chapter 7

Reference documents

- [1] OpenPCS 5.4.4 – User Manual.
- [2] IEC 61131-3: Programming Industrial Automation Systems – Karl-Heinz John, Michael Tiegelkamp - Springer.
- [3] CANopen Extension for IEC61131-3 – User manual – Edition March 2005 – Systec Electronic.
- [4] CiA DS 405 V2.0: CANopen Interface and Device Profile for IEC61131-3 Programmable Devices.
- [5] CiA 301 DSP V4.1: CANopen application layer and communication profile
- [6] CU-02 Installation manual (code: J30 - 658 - 1ACU-02 E).
- [7] CU-02 User manual (code: J30 - 478 - 1ACU02 E).
- [8] **sigmadue** I/O modules Installation Manuals: DI-16LV, DI-32LV, DO-04RL, DO-04TX, DO-08RL, DO-16TS, DO-16TP, DO-32TS, AI-02UI, AI-08HL, AO-08HL, DM-08TS, DM-16TS.
- [9] **sigmadue** I/O modules User Manuals: DI-16LV, DI-32LV, DO- 04RL, DO-04TX, DO-08RL, DO-16TS, DO-16TP, DO-32TS, AI-02UI, AI- 08HL, AO-08HL, DM-08TS, DM-16TS.
- [10] Ascon Firmware Function Block Library.
- [11] IEC 61131-3 Function Block Library.
- [12] I/O Function Block Library.