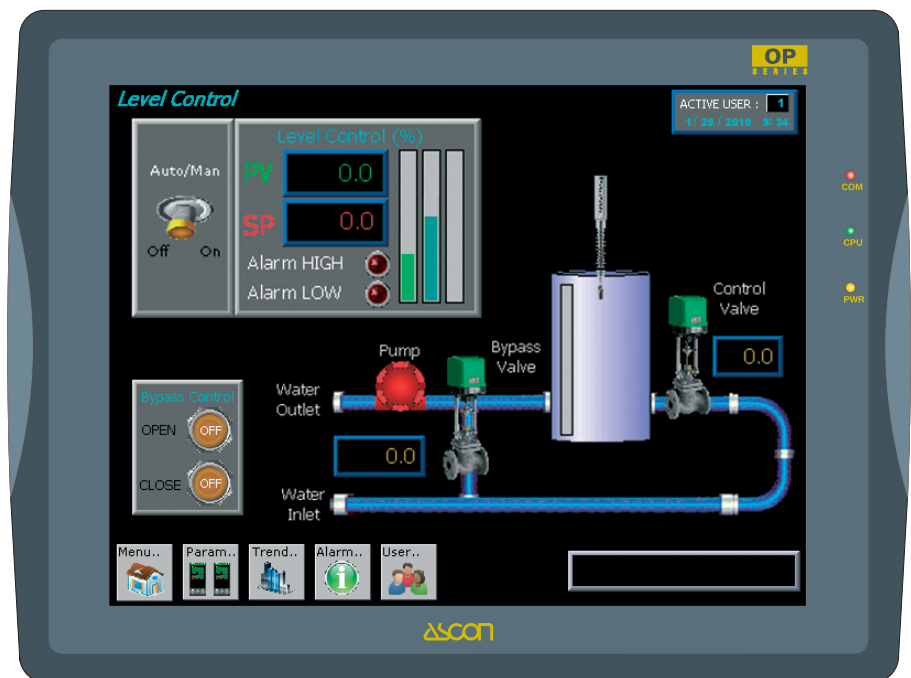


# Industrial Operator Panel with 12.1" touch screen colour graphic display **OP MT** line **8121X** model

- 12.1" color graphic display
- 65536 color TFT LCD display
- Fan-less cooling system
- 32 Bit 500 MHz RISC processor
- Built in Real Time Clock (RTC)
- Cold Cathode Fluorescent Lamp (CCFL) backlight x 2
- Super VGA (800 x 600 pixels) resolution
- 4 wire analog resistive touch screen
- Connection to industrial bus systems (more than 100 drivers)
- 256 MB DRAM user memory, 512 MB flash memory on board
- NEMA4 / IP65 front panel protection
- Programmable with Easy Builder 8000 software
- Display data in alphanumeric and graphic formats
- Dynamic graphic objects (bargraphs, gauges, XY plot, etc..)
- Data acquisition and trend presentation
- Recipes management and storage
- Alarms and historical alarm list
- Up to 12 levels of password protection
- 3 USB 1.1 host port and 1 USB 2.0 client port
- Ethernet port (10/100 baseT)
- Audio: 1 audio line out, 1 microphone line in
- CE / RoHS certifications



E

## ASCON spa

Via Falzarego, 9/11 - 20021 Baranzate - (Milano) Italy - Tel. +39 02 333 371; Fax +39 02 350 4243  
<http://www.ascon.it> - e-mail: [sales@ascon.it](mailto:sales@ascon.it)

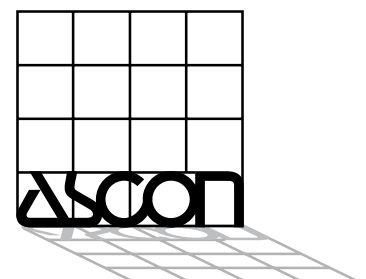
## ASCON Corporation

Tel.: +1 630 482 2950; Fax: +1 630 482 2956  
<http://www.asconcorp.com>  
 e-mail: [info@asconcorp.com](mailto:info@asconcorp.com)

## ASCON France

Tél.: +33 (0) 1 64 30 62 62; Fax: +33 (0) 1 64 30 84 98  
<http://www.ascon.fr>  
 e-mail: [ascon.france@ascon.fr](mailto:ascon.france@ascon.fr)

ISO 9001 Certified



## Technical data

Display	
Type	65536 color TFT
Graphic resolution	SVGA, 800 x 600 pixels
Active display area	12.1" diagonal
Backlight	2 x CCFL
Brightness	450 cd/m <sup>2</sup>
Contrast ratio	600 : 1
Backlight life time	50000 hours

Memory	
User memory	256 MB on board
Storage memory	512 MB Flash on board

Interfaces	
Com1 port	RS232/RS485, 2 or 4 wires
Com2 port	RS232
Com3 port	RS232/RS485, 2 wires
Ethernet port	10/100 Base-T
USB port	3 USB host, 1 miniUSB

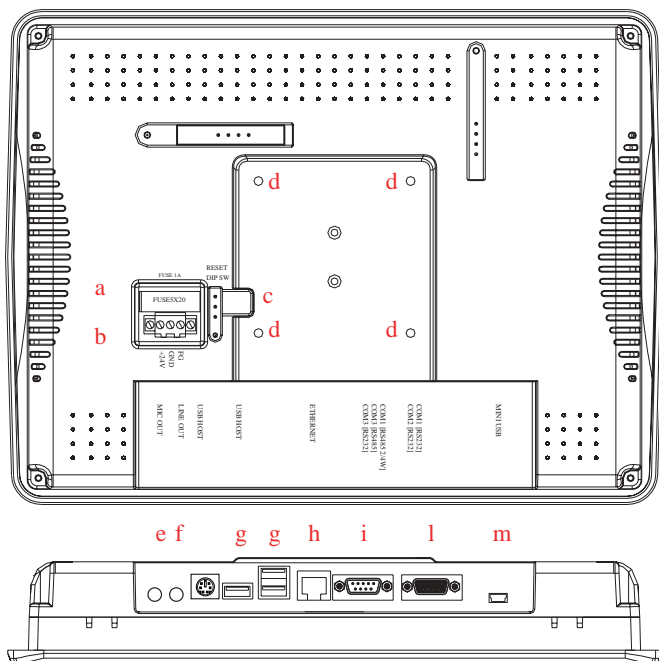
Functionality	
Data acquisition and trends	Standard
Recipe memory	2 x 128 kB
Alarms	65536
Event list	65536
Password	Standard, 121 levels
Hardware RTC	Standard, battery backed-up
Screen saver	Standard
Buzzer	Standard (audible feedback for touch screen)
Power supply voltage	24 Vdc ±5% (polarity sensitive)
Max. power consumption	~ 800 mA
Fuse	1.6 A
Weight	~ 2.1 kg (4.63 lb)
Operating temperature	0...45 °C (32...111°F)
Operating and storage humidity	10...90 % RH non-condensing
Protection class	NEMA4 / IP65 (front panel)

Product designed for installation in an industrial environment in compliance with the following regulations:

EMI:	FCC class A
CE:	EN50081-2, EN50082-2

## Connections/Dimensions

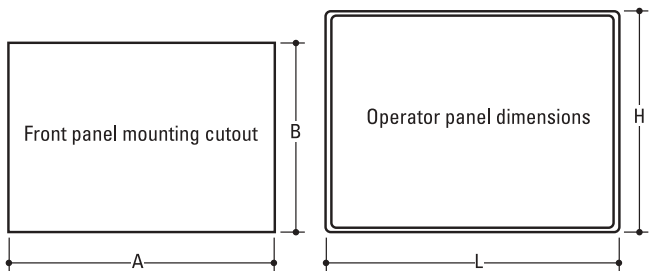
### Connections



- a. Fuse
- b. Power terminals
- c. DIP Switches/Reset button
- d. VESA 75mm screw holes
- e. MIC In
- f. Sound output
- g. USB host
- h. Ethernet port 10/100T
- i. Com1 [RS-232]
- Com2 [RS-232]
- l. Com1 [RS-485] 2/4 wires
- Com3 [RS-232/RS-485]
- m. MiniUSB

### Cutout and front view

Panel dimensions L x H	322 x 243 mm	12.69 x 9.02"
Cutout A x B	305 x 231 mm	12.01 x 9.09 in"
Depth (type - 0045)	51 mm	1.99"
Max. panel thickness	7 mm	0.28"



## Ordering code

