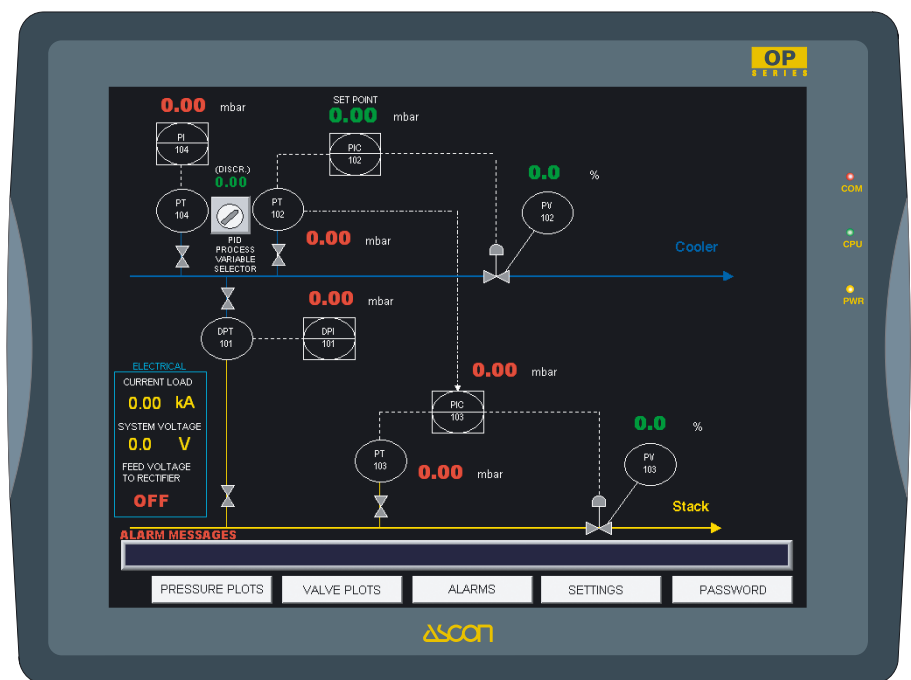


Industrial Operator Panel with 12.1" touch screen colour graphic display **OP MT** line **8121T** model

- 12.1" colour graphic display
- 65536 colour TFT LCD display
- Fan-less cooling system
- CPU 32 Bit RISC processor
- Built in Real Time Clock (RTC)
- Cold Cathode Fluorescent Lamp (CCFL) backlight
- Full SVGA (800 x 600 pixels) resolution
- 4 wires analog resistive touch screen
- Connection to industrial bus systems (more than 65 drivers)
- 64 MB DRAM user memory, 32 MB flash memory on board
- NEMA4 / IP65 front panel protection
- Programmable with Easy Builder 8000 software
- Display data in alphanumeric and graphic formats
- Dynamic graphic objects (bargraphs, gauges, XY plot, etc..)
- Data acquisition and trend presentation
- Recipes management and storage
- Alarms and historical alarm list
- Up to 7 levels of password protection
- CE / UL / RoHS certifications



ASCON spa

Via Falzarego, 9/11 - 20021 Baranzate - (Milano) Italy - Tel. +39 02 333 371; Fax +39 02 350 4243
<http://www.ascon.it> - e-mail: sales@ascon.it

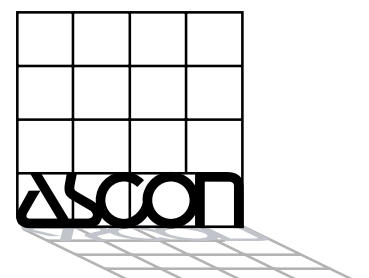
ASCON Corporation

Tel.: +1 630 482 2950; Fax: +1 630 482 2956
<http://www.asconcorp.com>
 e-mail: info@asconcorp.com

ASCON France

Tél.: +33 (0) 1 64 30 62 62; Fax: +33 (0) 1 64 30 84 98
<http://www.ascon.fr>
 e-mail: ascon.france@ascon.fr

ISO 9001 Certified

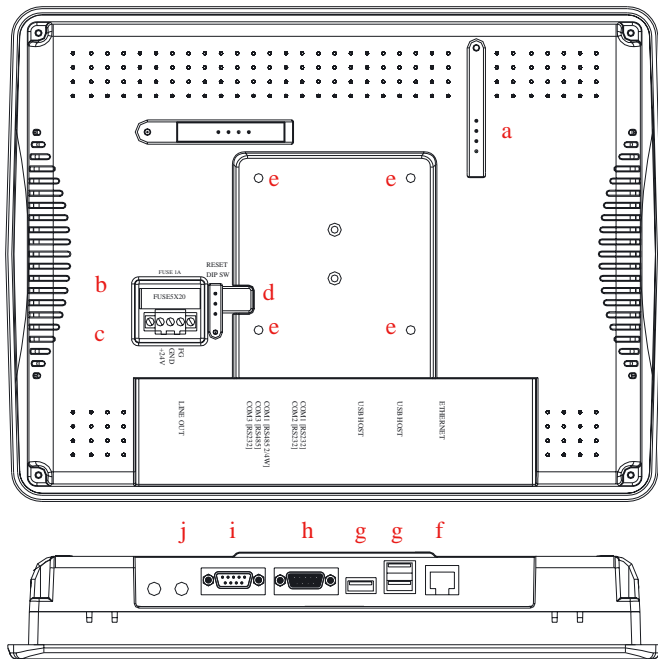


Technical data

Display		Functionality	
Type	65536 colour TFT	Data acquisition and trends	Standard
Graphic resolution	Full SVGA, 640 x 480 pixels	Recipe memory	128 kB
Active display area	12.1" diagonal	Alarms	1024
Backlight	CCFL	Event list	1024
Brightness	300 cd/m ²	Password	Standard, 7 levels
Contrast ratio	200 : 1	Hardware RTC	Standard, battery backed-up
Backlight life time	50000 hours	Screen saver	Standard
Memory		Buzzer	Standard (audible feedback for touch screen)
User memory	64 MB on board	Power supply voltage	24 Vdc ±5% (polarity sensitive)
Storage memory	32 MB Flash on board	Max. power consumption	~ 500 mA
Memory expansion	1 CompactFlash™ card slot	Fuse	1 A
Interfaces		Weight	~ 2.1 kg (4.63 lb)
Com1 port	RS232/RS485, 2 or 4 wires	Operating temperature	0...45 °C (32...111°F)
Com2 port	RS232	Operating and storage humidity	10...90 % RH non-condensing
Com3 port	RS232/RS485, 2 wires	Protection class	NEMA4 / IP65 (front panel)
Ethernet port	10/100 Base-T	Product designed for installation in an industrial environment in compliance with the following regulations:	
USB port	3 USB 2.0 ports	Radiation emissions	EN 55011 (group 1 , class A)
Sound port	20 bits stereo output	Generic emissions	EN 50081-2
		Noise immunity	EN 50082-2

Connections/Dimensions

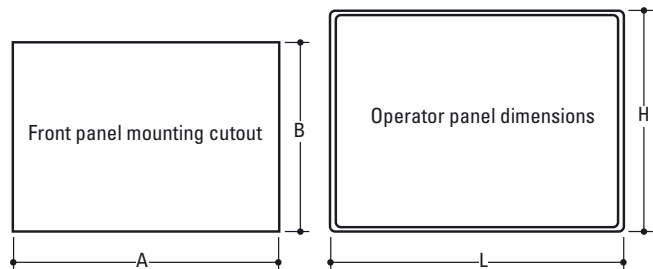
Connections



- a. CompactFlash™ slot
- b. Fuse
- c. Power terminals
- d. DIP Switches/Reset button
- e. VESA 75mm screw holes
- f. Ethernet port 10/100T
- g. USB host
- h. Com1 [RS-232]
Com2 [RS-232]
- i. Com1 [RS-485] 2/4 wires
Com3 [RS-232/RS-485]
- j. Sound output

Cutout and front view

Panel dimensions L x H	322 x 243 mm	12.69 x 9.02"
Cutout A x B	305 x 231 mm	12.01 x 9.09 in"
Cutout depth (type - 0045)	51 mm	1.99"
Max. panel thickness	5 mm	0.2"



Ordering code

