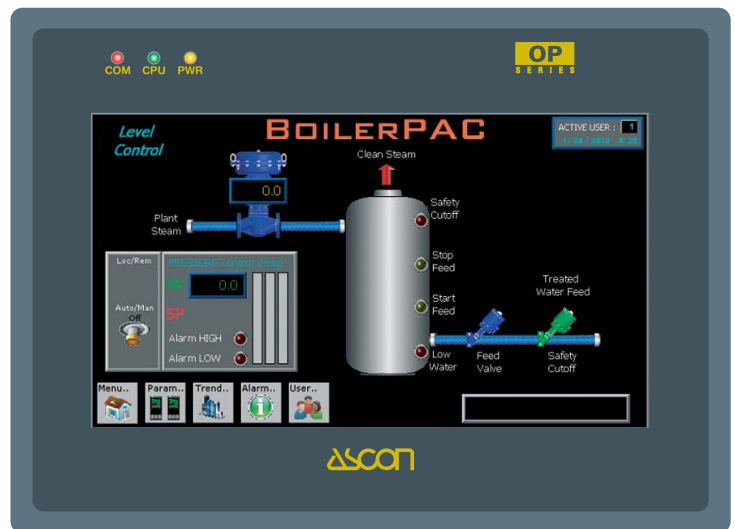


Industrial Operator Panel with 7.0" wide screen colour graphic display **OP MT** line **8070iH** model

- 7.0" color graphic display
- 65536 color TFT LCD display
- Fan-less cooling system
- 32 Bit 400 MHz RISC processor
- Built in Real Time Clock (RTC)
- LED backlight
- WVGA (800 x 480 pixels) resolution
- 4 wire analog resistive touch screen
- Connection to industrial bus systems (more than 100 drivers)
- 64 MB DRAM user memory, 256 MB flash memory on board
- NEMA4 / IP65 front panel protection
- Programmable with Easy Builder 8000 software
- Display data in alphanumeric and graphic formats
- Dynamic graphic objects (bargraphs, gauges, XY plot, etc..)
- Data acquisition and trend presentation
- Recipes management and storage
- Alarms and historical alarm list
- Up to 12 levels of password protection
- 1 USB 1.1 host port and 1 USB 2.0 client port
- Ethernet port (10/100 baseT)
- SD card slot
- CE / RoHS certifications



ASCON spa

Via Falzarego, 9/11 - 20021 Baranzate - (Milano) Italy - Tel. +39 02 333 371; Fax +39 02 350 4243
<http://www.ascon.it> - e-mail: sales@ascon.it

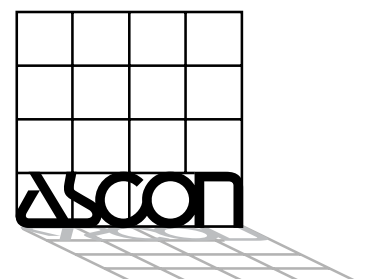
ASCON Corporation

Tel.: +1 630 482 2950; Fax: +1 630 482 2956
<http://www.asconcorp.com>
 e-mail: info@asconcorp.com

ASCON France

Tél.: +33 (0) 1 64 30 62 62; Fax: +33 (0) 1 64 30 84 98
<http://www.ascon.fr>
 e-mail: ascon.france@ascon.fr

ISO 9001 Certified



Technical data

Display	
Type	65536 color TFT
Graphic resolution	Wide VGA, 800 x 480 pixels
Active display area	7.0" diagonal
Pixel pitch (H x V)	0.1905 x 0.06305
Viewing angle (T / B / R / L)	70 / 50 / 70 / 70
Backlight	LED
Brightness	300 cd/m ²
Contrast ratio	500 : 1
Backlight life time	30000 hours

Memory	
User memory	64 MB on board
Storage memory	256 MB Flash on board
Memory expansion	1 SD™ card slot

Interfaces	
Com1 port	RS232/RS485, 2 or 4 wires
Com2 port	RS232
Com3 port	RS232/RS485, 2 wires
Ethernet port	10/100 Base-T
USB1 port	1 USB 1.1 Host port
USB2 port	1 USB 2.0 High Speed Device

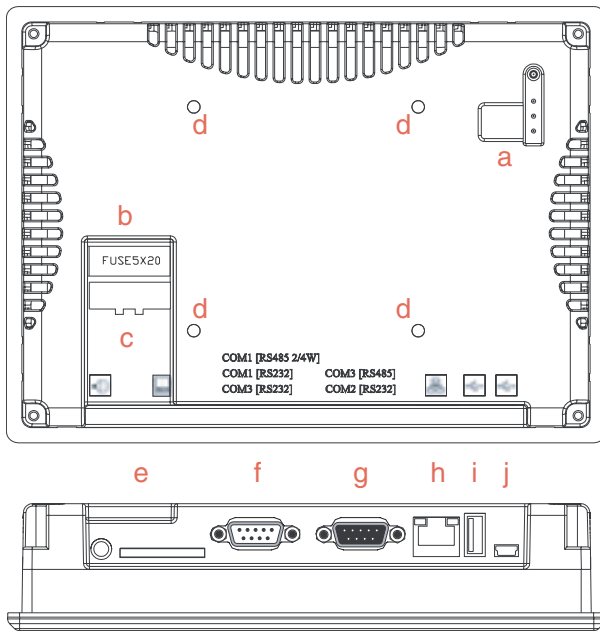
Functionality	
Data acquisition and trends	Standard
Recipe memory	128 kB x 2
Alarms	65536
Event list	65536
Password	Standard, 12 levels
Hardware RTC	Standard, battery backed-up
Screen saver	Standard
Buzzer	Standard (audible feedback for touch screen)
Power supply voltage	24 Vdc ±20% (polarity sensitive)
Max. power consumption	~ 250 mA
Fuse	1.25 A
Weight	~ 0.85 kg (~ 1.87 lb)
Operating temperature	0...+45 °C (32...113°F)
Operating and storage humidity	10...90 % RH non-condensing
Protection class	NEMA4 / IP65 (front panel)

Product designed for installation in an industrial environment in compliance with the following regulations:

EMI: FCC class A
CE: EN50081-2, EN50082-2

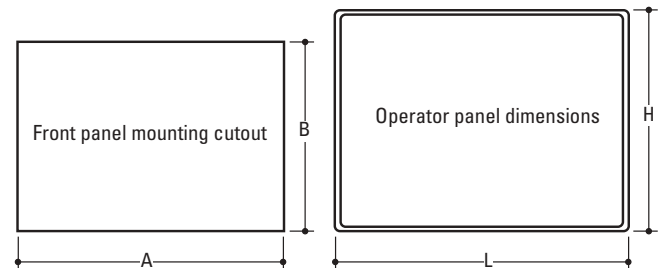
Connections/Dimensions

Connections



Cutout and front view

Panel dimensions L x H	200.35 x 146.35 mm	7.888 x 5.762"
Cutout A x B	192 x 138 mm	7.559 x 5.433"
Depth (type - 0045)	42.55 mm	1.675"
Max. panel thickness	7 mm	0.3"



- a. DIP Switches and Reset button
- b. Fuse
- c. Power terminals
- d. VESA 75mm screw holes
- e. Secure Digital (SD)™ slot
- f. Com1 [RS-232], Com2 [RS-232]
- g. Com1 [RS-485 4/2w]
Com3 [RS-232/RS-485]
- h. Ethernet port 10/100T
- i. USB host
- j. USB client high speed

Ordering code

