

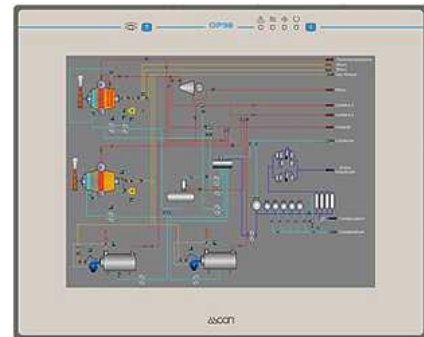


## Operator Panel OP39

The OP39 is a state-of-the-art HMI device featuring a touch screen interface and 10.4" TFT color graphic display. The 64K colors brilliant TFT display increase the realism of images. The VGA resolution makes it the ideal solution for high-end HMI applications.

### General Features

- 10.4" TFT color display
- VGA (640x480 pixels) resolution
- 64K colors
- Resistive touch screen
- Connection to industrial bus systems and Ethernet (requires optional plug-in modules)
- 32 MB internal user memory
- Compatible with video input module
- IP65 front panel protection



### Highlights

The OP39 HMI is part of Ascon's family of "OP" touch screen panels and supports the common functionalities of Ascon "OP" operator panels:

|   |   |
|---|---|
| <ul style="list-style-type: none"> <li>• Powerful and intuitive programming with Ascon Designer software</li> <li>• Support of more than 130 communication drivers for third party devices</li> <li>• Optional plug-in modules for connection to industrial fieldbus systems (Profibus DP, DeviceNet, Interbus, CanOpen...) and Ethernet (Modbus TCP/IP...).</li> <li>• Dual-driver communication capability</li> <li>• Vector graphic capabilities including support of multiple layers and object transparency</li> <li>• Display data in numerical, text, bargraph and graphic image formats</li> <li>• Dynamic graphic objects</li> <li>• Extended bitmaps library of industrial objects for an easy representation of the process</li> <li>• Multi-language support limited only by the available memory</li> <li>• 8 Level password protection</li> <li>• Powerful macro editor to configure touch screen operations</li> </ul> | <ul style="list-style-type: none"> <li>• Data Acquisition and Trend representation. Trend data can be transferred to host computer using Ethernet connection (optional) or the Data Exchanger tool using a serial connection</li> <li>• Recipe Data Storage. Recipe data can be transferred to host computer using Ethernet connection (optional) or the Data Exchanger tool using a serial connection</li> <li>• Realtime and Historical Alarms/Events list printable or transferable to host computer using Ethernet connection (optional) or the Data Exchanger tool using a serial connection</li> <li>• Custom Reports can be printed to serial printers</li> <li>• Ethernet or serial Client/Server or Master/Slave connection to share data between OP HMIs and to serve data using the OPC Server technology</li> <li>• Video input option</li> </ul> |
|---|---|



**Technical data**

|   |  |
|---|--|
| <b>Display</b><br>Type<br>Resolution<br>Active display area<br>Colors<br>Backlight<br>Brightness<br><br>Dimming | TFT True colors<br>VGA 640x480 pixels<br>218x159 mm (10.4" diagonal)<br>64K<br>CCFL, 50000 hours *<br>450 cd/m <sup>2</sup> with automatic temperature compensation, adjustable via software<br>Included |
| <b>Memory</b><br>User memory<br>User memory expansion   | 32 MB internal Flash<br>Optional removable 32 MB SSFDC memory card   |
| <b>Front panel</b><br>Touch screen<br>Function keys<br>System keys<br>User LED's<br>System LED's                | Analog resistive<br>1<br>None<br>1<br>4  |
| <b>Interfaces</b><br>PC/Printer port<br>PLC port<br><br>Aux port (fieldbus and Ethernet)<br>RS232 prog speed    | Included<br>RS232, RS485, RS422, 20 mA Current Loop<br>With optional modules<br><br>9600 – 38400 bps   |
| <b>Ratings</b><br>Power supply voltage<br>Current consumption<br>Fuse<br>Weight                                 | 18 – 30 VDC<br>Max 0.7 A at 24 VDC<br>Automatic<br>2.3 Kg (5 lbs)  |

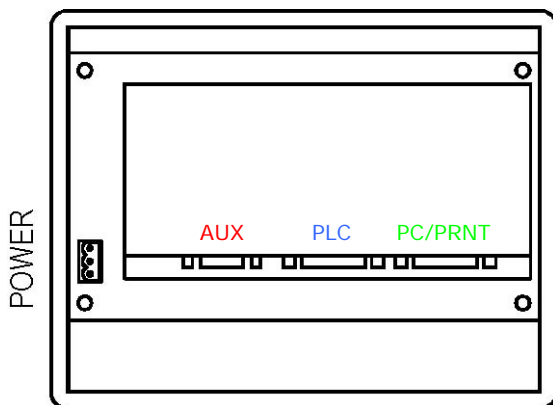
|   |  |
|---|--|
| <b>Functionality</b><br>Vector graphics<br>Dual driver capability<br>Video input<br>Data Acquisition and Trends<br>Recipe memory<br>OP network<br>Number of Alarms<br>Number of Events<br>Password<br>Hardware Real Time Clock<br>Screen saver<br>Buzzer<br><br>Battery | Included<br>Included<br>Optional<br>Included<br>32 KB<br>Client/Server<br>1024<br>1024<br>Included<br>Battery backed<br>Included<br>Audible feedback for touch screen<br>3 V 270 mA Lithium, non rechargeable, user replaceable, model CR2430. Replace with same component or equivalent compatible with operating temperature of the product. |
| <b>Environmental Conditions</b><br>Operating temperature<br>Storage temperature<br>Operating and storage humidity<br>Protection class   | 0÷45 °C (32 ÷ 122 °F)<br>-20÷70 °C (-4 ÷ 158 °F)<br>5÷85 % RH non-condensing<br>IP65 (front panel)   |
| <b>Dimensions</b><br>Faceplate L x H<br>Cutout A x B<br>Mounting depth (type 0045)<br>Max panel thickness   | 287x232 mm (11.30x9.14")<br>276x221 mm (10.87x8.70")<br>91 mm (3.58")<br>5 mm (0.2")   |

\* the lamp lifetime is a typical value for continuous operations at 25 °C (46 °F)

This product is designed for installation in an industrial environment in compliance with the regulations:

- Emitted interference           EN 61000-6-4, 2001
- Noise immunity                EN 61000-6-2, 2001

**Connections**

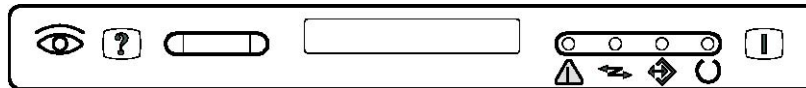


| Pin | Description              |
|-----|--------------------------|
| 1   | Frame Ground             |
| 2   | RXD                      |
| 3   | TXD                      |
| 4   | +5 V output (max 100 mA) |
| 5   | GND                      |
| 6   | Channel A-               |
| 7   | Channel B-               |
| 8   | Reserved                 |
| 9   | Reserved                 |
| 10  | RTS                      |
| 11  | CTS                      |
| 12  | Reserved                 |
| 13  | Reserved                 |
| 14  | Channel A+               |
| 15  | Channel B+               |



## Indicators

There are several dedicated LED indicators on the front panel of the unit. Functions are described in the table below. A customizable legend strip is included.



| LED | Color | Status | Description   |
|-----|-------|--------|---|
|     | red   | OFF    | No hardware problem detected  |
|     |       | BLINK  | Battery low   |
|     |       | SOLID  | Hardware fault  |
|     | green | OFF    | No touch cell active  |
|     |       | SOLID  | While any touch cell is active (visual feedback)  |
|     | green | OFF    | Hardware fault  |
|     |       | SOLID  | Unit in operation   |
|     | green | BLINK  | Communication error   |
|     |       | SOLID  | Communication OK  |
|     | red   | OFF    | No alarms   |
|     |       | BLINK  | Alarm requires acknowledgment   |
|     |       | SOLID  | Alarm active  |
|     | green |        | May be user controlled as LED number 65 using the Macro Editor. Turns ON when recipe/event backup is being performed. |

The service area at the top of the panel also includes 2 buttons.

| Button | Description  |
|--------|--|
|        | User programmable with the Keyboard Macro Editor. Not available in RDA. Ascon Designer 5.08 SP7 or higher is required. |
|        | Reserved for future use  |

Subject to change without notice.

The information contained in this document is provided for informational purposes only. While efforts were made to verify the accuracy of the information contained in this document, it is provided "as is" without warranty of any kind.