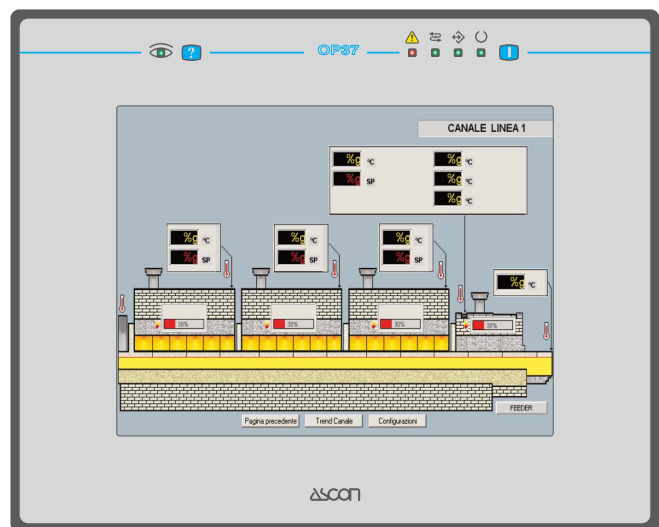


Industrial Operator Panel with 7.5" touch screen colour TFT display **OP 37** line

- 7.5" graphic display
- 64 k colour TFT display
- Cold Cathode Fluorescent Lamp (CCFL) backlight
- VGA (640 x 480 pixels) resolution
- Resistive touchscreen
- Connection to industrial bus systems (more than 130 drivers) and Ethernet
- Plug-in communication modules for DeviceNet, Interbus, CANopen and Ethernet
- 32 MB user memory
- IP65 front panel protection
- **Auto-configuration for ASCON deltadue® modules**
- Programmable with Designer software (optional)
- Dual-driver communications capability
- Vector graphic capabilities, multiple layers and object transparency
- Video input option
- Display data in alphanumeric and graphical formats
- Dynamic graphic objects
- Data acquisition and trend presentation
- Analog gauge objects
- Recipe data storage
- Multi-language support
- Powerful macro editor for touch screen operations
- Alarms and historical alarm list
- Up to eight levels of password protection
- Report printing to serial printer



ASCON spa

Via Falzarego, 9/11 - 20021 Baranzate - (Milano) Italy - Tel. +39 02 333 371; Fax +39 02 350 4243
<http://www.ascon.it> - e-mail: sales@ascon.it

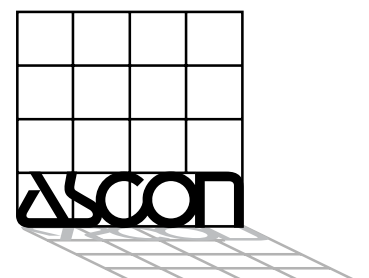
ASCON Corporation

Tel.: +1 630 482 2950; Fax: +1 630 482 2956
<http://www.asconcorp.com>
 e-mail: info@asconcorp.com

ASCON France

Tél.: +33 (0) 1 64 30 62 62; Fax: +33 (0) 1 64 30 84 98
<http://www.ascon.fr>
 e-mail: ascon.france@ascon.fr

ISO 9001 Certified



Technical data

Display	
Type	64 k colours TFT
Graphic resolution	VGA, 640 x 480 pixels
Active display area	154 x 116 mm (7.5" diagonal)
Backlight	CCFL, 50000 h typical
Brightness	330 cd/m ² typical
Dimming	Standard
Memory	
User memory	32 MB Internal flash
Memory expansion	Optional removable 32 MB SSFDC card
Interfaces	
PC/Printer port	Standard
PLC port	RS-232, RS-485, RS-422, 20 mA Current Loop
Aux port (fieldbus and Ethernet connection)	Standard, with optional modules
Video input	Standard
Serial programming speed	9600... 38400 bps

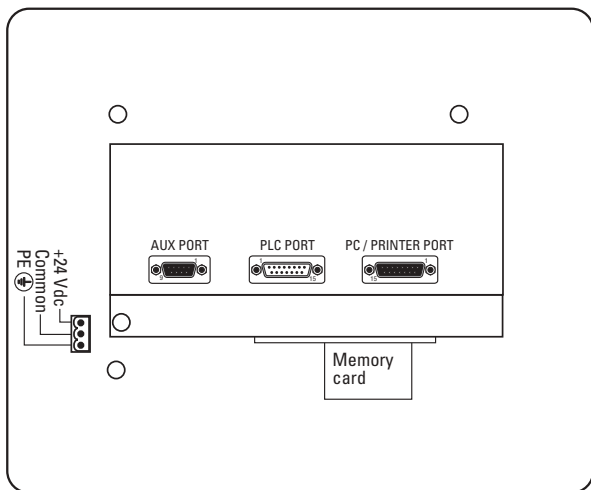
Functionality	
Vector graphics	Standard
Dual driver capability	Standard
Video input	Standard
Data acquisition and trends	Standard
Recipe memory	32 kB
Alarms	1024
Event list	1024
Password	Standard
Hardware RTC	Standard, battery backed-up
Screen saver	Standard
Buzzer	Standard (audible feedback for touch screen)
Replaceable battery	CR2430 (3V 270mA Lithium)
Power supply voltage	18...30 Vdc (polarity sensitive)
Max. power consumption	~ 700 mA at 24 Vdc
Fuse	Automatic
Weight	~ 1.6 kg
Operating temperature	0...45 °C
Storage temperature	-20...+70 °C
Operating and storage humidity	5...85 % RH non-condensing
Protection class	IP65 (front panel)

Product designed for installation in an industrial environment in compliance with the following regulations:

Emitted interference	EN 61000-6-4, 2001
Noise immunity	EN 61000-6-2, 2001

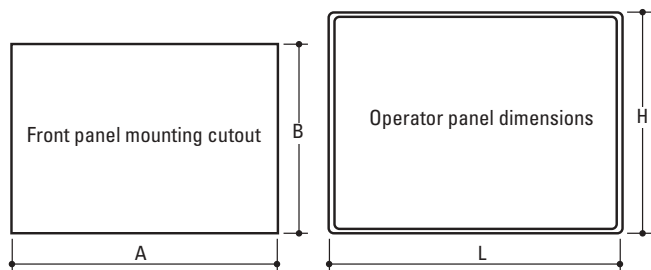
Connections/Dimensions

Connections

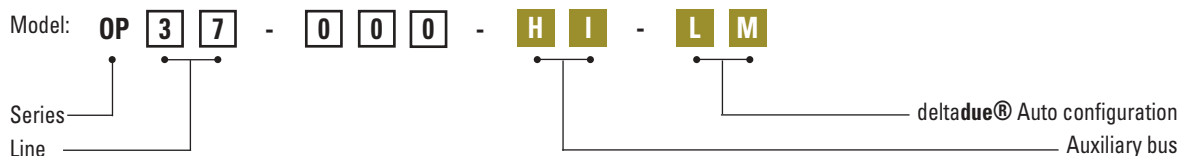


Cutout and front view

Panel dimensions L x H	232 x 187 mm	9.14 x 7.63"
Cutout A x B	221 x 176 mm	8.70 x 6.93"
Mounting depth (type - 0045)	71 mm	2.8"
Max. panel thickness	5 mm	0.2"



Ordering code



Auxiliary bus	H	I
None	0	0
CANbus	C	B
deltadue® Auto configuration	L	M
No	0	0
Yes	A	C