

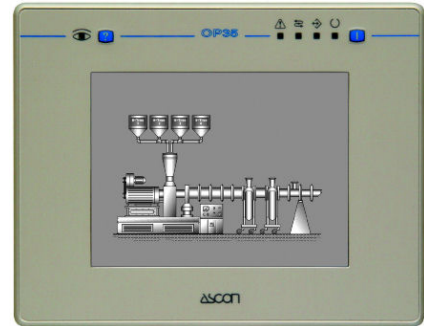


# Operator Panel OP35

The OP35 is a state-of-the-art HMI device featuring a touch screen interface with 5.6" graphic display and LED backlighting. A monochrome (8 grey scale) display provides the best compromise for cost effective graphic quality. The metal bezel offers a rugged flat design and an appealing look.

## General Features

- 5.6" diagonal graphic display
- Monochrome (8 grey scale) display with long-life white LED backlight
- ¼ VGA (320x240 pixels) resolution
- Resistive touch screen
- Connection to industrial bus systems and Ethernet (requires optional plug-in modules)
- Large memory size (32 MB Flash) on removable media
- IP65 front panel protection



## Highlights

The OP35 HMI is part of Ascon's family of "OP" touch screen panels and supports the common functionalities of Ascon "OP" operator panels:

<ul style="list-style-type: none"> <li>• Powerful and intuitive programming with Ascon Designer software</li> <li>• Support of more than 130 communication drivers for third party devices</li> <li>• Optional plug-in modules for connection to industrial fieldbus systems (Profibus DP, DeviceNet, Interbus, CanOpen...) and Ethernet (Modbus TCP/IP...)</li> <li>• Dual-driver communication capability</li> <li>• Vector graphic capabilities including support of multiple layers and object transparency</li> <li>• Display data in numerical, text, bargraph and graphic image formats</li> <li>• Dynamic graphic objects</li> <li>• Extended bitmaps library of industrial objects for an easy representation of the process</li> <li>• Multi-language support limited only by the available memory</li> <li>• 8 level password protection</li> <li>• Powerful macro editor to configure touch screen operations</li> </ul>	<ul style="list-style-type: none"> <li>• Data Acquisition and Trend representation. Trend data can be transferred to host computer using Ethernet connection (optional) or the Data Exchanger tool using a serial connection</li> <li>• Recipe Data Storage. Recipe data can be transferred to host computer using Ethernet connection (optional) or the Data Exchanger tool using a serial connection</li> <li>• Realtime and Historical Alarms/Events list printable or transferable to host computer using Ethernet connection (optional) or the Data Exchanger tool using a serial connection</li> <li>• Custom Reports can be printed to serial printers</li> <li>• Ethernet or serial Client/Server or Master/Slave connection to share data between OP HMIs and to serve data using the OPC Server technology</li> </ul>
--	---



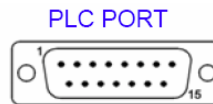
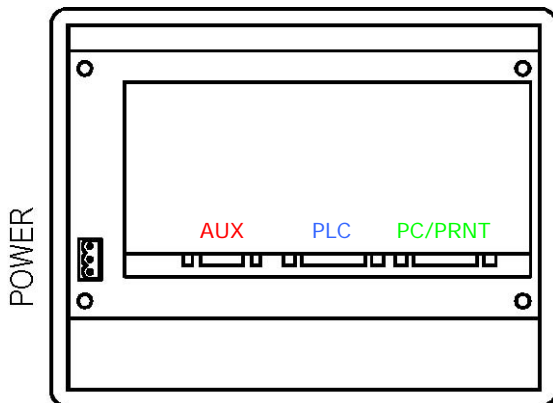
**Technical data**

<b>Display</b> Type Resolution Active display area Colors Rows/Columns Scalable fonts User definable characters Contrast regulation	Monochrome LCD 320x240 pixels 121x91 mm (5.6" diagonal) 8 Grey scale 16x40 Included 256 Software with temperature compensation
<b>Memory</b> User memory User memory expansion	32 MB internal Flash Optional removable 32 MB SSFDC memory card
<b>Front panel</b> Touch screen Function keys System keys User LED's System LED's	Analog resistive 1 None 1 4
<b>Interfaces</b> PC/Printer port PLC port  Aux port (fieldbus and Ethernet) RS232 prog speed	Included RS232, RS485, RS422, 20 mA Current Loop With optional modules  9600 – 38400 bps
<b>Ratings</b> Power supply voltage Current consumption Fuse Weight	18 – 30 VDC Max 0.6 A at 24 VDC Automatic 1.4 Kg (3 lbs)

<b>Functionality</b> Vector graphics Dual driver capability Data Acquisition and Trends Recipe memory OP network Number of Alarms Number of Events Password Hardware Real Time Clock Screen saver Buzzer  Battery	Included Included Included 32 KB Client/Server 1024 1024 Included Battery backed Included Audible feedback for touch screen 3 V 270 mA Lithium, non rechargeable, user replaceable model CR2430. Replace with same component or equivalent compatible with operating temperature of the product.
<b>Environmental Conditions</b> Operating temperature Storage temperature Operating and storage humidity Protection class	0÷50 °C (32 ÷ 122 °F) -20÷70 °C (-4 ÷ 158 °F) 5÷85 % RH non-condensing IP65 (front panel)
<b>Dimensions</b> Faceplate L x H Cutout A x B Mounting depth (type 0045) Max panel thickness	187x147 mm (7.36x5.79") 176x136 mm (6.93x5.35") 79 mm (3.12") 5 mm (0.2")

This product is designed for installation in an industrial environment in compliance with the regulations:  
 - Emitted interference           EN 61000-6-4, 2001  
 - Noise immunity                EN 61000-6-2, 2001

**Connections**

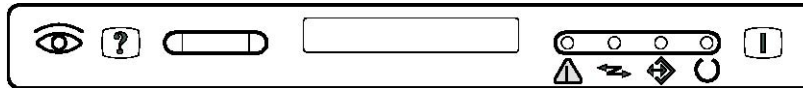


Pin	Description
1	Frame Ground
2	RXD
3	TXD
4	+5 V output (max 100 mA)
5	GND
6	Channel A-
7	Channel B-
8	Reserved
9	Reserved
10	RTS
11	CTS
12	Reserved
13	Reserved
14	Channel A+
15	Channel B+



## Indicators

There are several dedicated LED indicators on the front panel of the unit. Functions are described in the table below. A customizable legend strip is included.



LED	Color	Status	Description
	red	OFF	No hardware problem detected
		BLINK	Battery low
		SOLID	Hardware fault
	green	OFF	No touch cell active
		SOLID	While any touch cell is active (visual feedback)
	green	OFF	Hardware fault
		SOLID	Unit in operation
	green	BLINK	Communication error
		SOLID	Communication OK
	red	OFF	No alarms
		BLINK	Alarm requires acknowledgment
		SOLID	Alarm active
	green		May be user controlled as LED number 65 using the Macro Editor. Turns ON when recipe/event backup is being performed.

The service area at the top of the panel also includes 2 buttons.

Button	Description
	User programmable with the Keyboard Macro Editor. Not available in RDA. Ascon Designer 5.08 SP7 or higher is required.
	Reserved for future use

Subject to change without notice.

The information contained in this document is provided for informational purposes only. While efforts were made to verify the accuracy of the information contained in this document, it is provided "as is" without warranty of any kind.