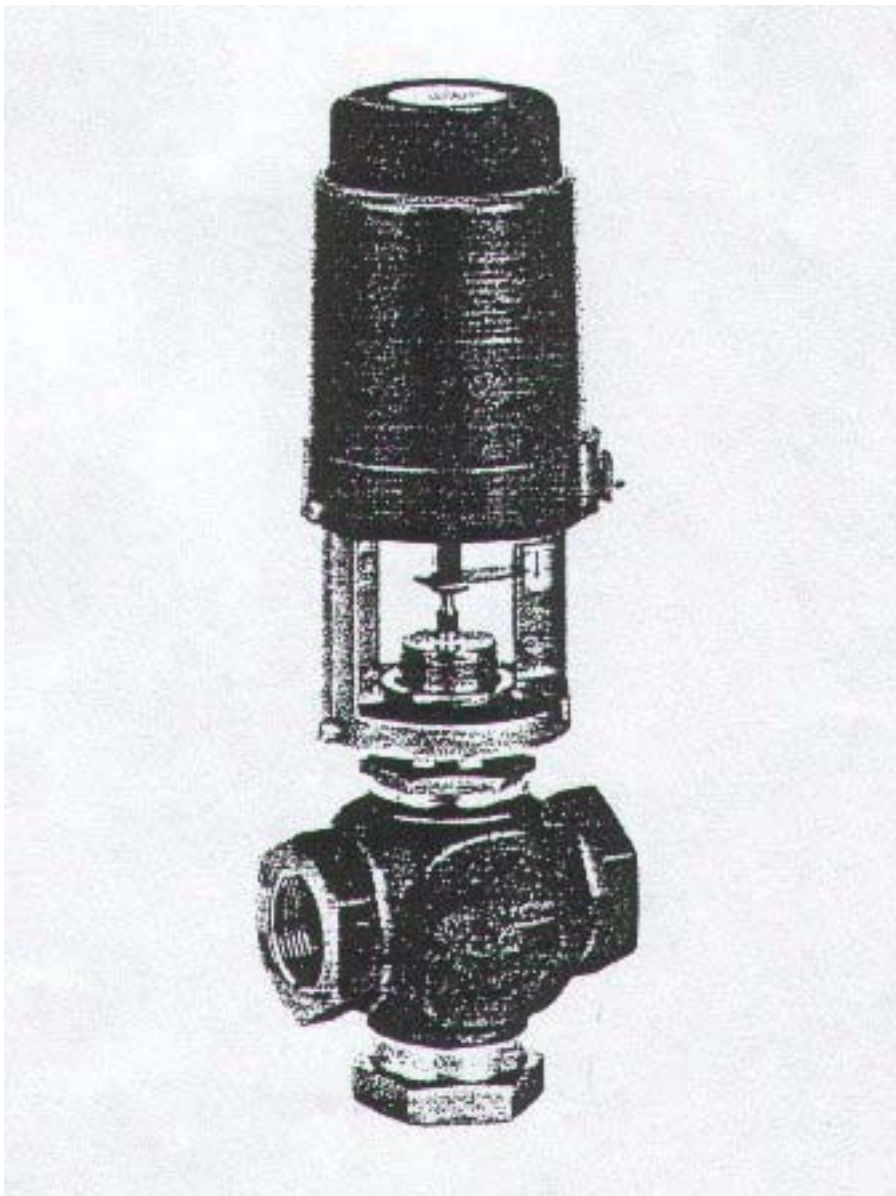


Threaded 2 and 3 ways mixing valves ERVB Series

B.T. 01.02.2000 (Data Sheet)

The ERVB series electrically bronze valves with female threaded connection are designed primarily to regulate Heated/Chilled water glycole solutions and steam flow (HVAC systems) in response to the demand of a controller, in heating, ventilating and air conditioning systems. These valves are available in normally open, normally closed and three way mixing configurations.



Ascon Corporation
1884 East Fabyan Parkway, Batavia, Illinois 60510
630-482-2950

MAXIMUM CLOSE-OFF PRESSURE

Valve Size

Inches	Valve Size		Kv Value	Two Way (kPa)	Three Way (kPa)
	DN / ND				
1/2	15		0.63 / 1.0 / 1.6	2379	2379
1/2	15		2.5 / 4.0	2379	2379
3/4	20		6.3	1930	1930
1	25		10	1234	1234
1 1/4	32		16	752	752
1 1/2	40		25	483	483
2	50		40	310	310

Note: The maximum close-off pressure listed is limited to the maximum allowable ANSI valve body rating corresponding to the maximum temperature rating (2380 kPa at 138°C) of the valve.

ACTUATOR CHARACTERISTICS

Motor Reverse	synchronous motor
Command signal	Three point stepping
Power supply	24V 50/60Hz
Power consumption	5,5 VA
Cover material	ABS
Protection	IP42
Temperature limit	-5 ... 55°C
Humidity limit	90% HR non condensating

VALVE CHARACTERISTICS

Body valve material	Cast Bronze
Body thread	BSP Gas Parallel
Body rating	PN16
Trim material	Brass
Cone characteristic	Equal% 2, Linear 3 way
Stuffing box material	Self adj. EPR ring pack
Leakage	0.01% of max flow
ANSI Class	4
Stroke	8...19mm
Rangeability	25:1
Temperature	36...150°F
Fluid temperature	36...248°F

INSTALLATION AND SERVICE

It is recommended that the ERVB series be mounted in an upright position in a conveniently accessible location. Sufficient clearance must be allowed for the actuator removal (see the below table). The valve must be piped with the flow in the direction indicated on the valve body, so that the plug seats against the flow. All the wiring must be in accordance with applicable electrical code requirements.

Note: The actuator must be protected against dripping water. The actuator must not be covered with thermal insulating material.

Ascon Corporation
1884 East Fabyan Parkway, Batavia, Illinois 60510
630-482-2950

OVERALL DIMENSIONS (mm)

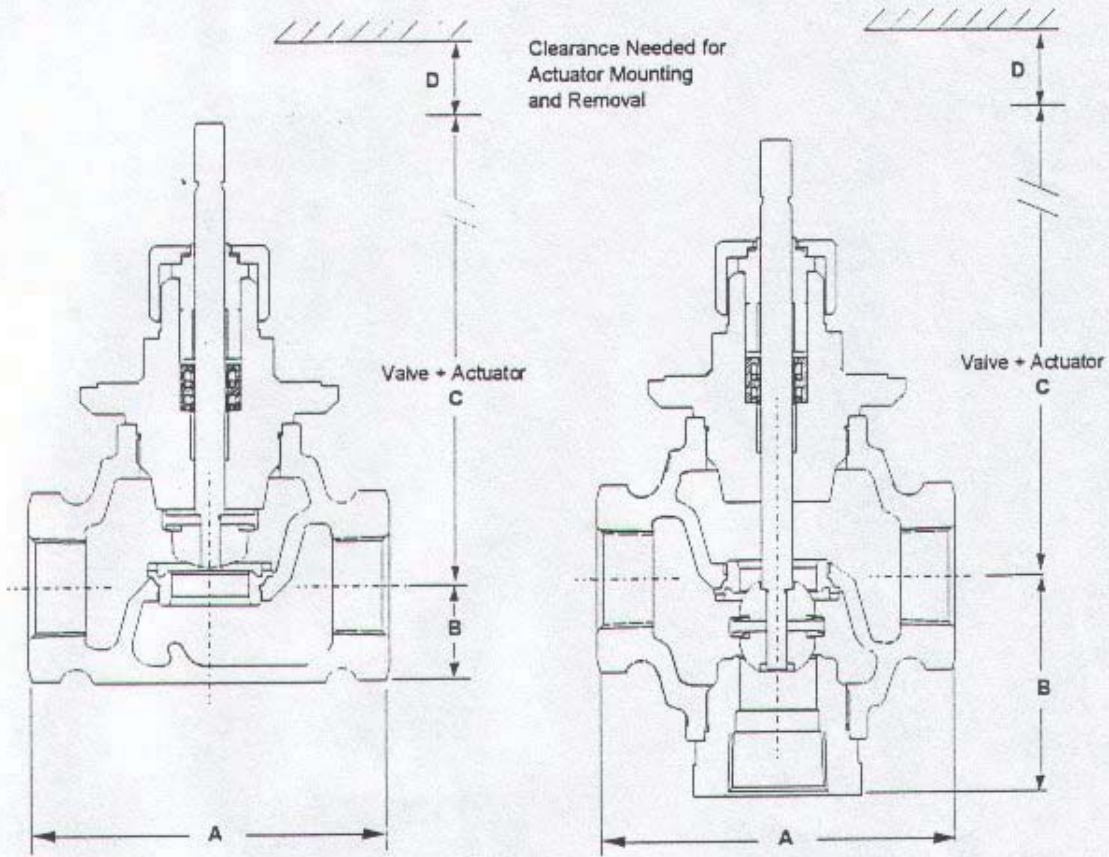


Figure 1: Two Way and Three Way Valve Dimensions

Valve Size		A	B		C	D
Inches	ND	2 & 3 Way	2 Way	3 Way	2 & 3 Way	2 & 3 Way
1/2	15	76	39	46	220	101
3/4	20	81	41	54	220	101
1	25	104	44	65	244	101
1 1/4	32	119	51	70	244	101
1 1/2	40	130	70	85	270	101
2	50	150	72	95	280	101

Ascon Corporation
 1884 East Fabyan Parkway, Batavia, Illinois 60510
 630-482-2950

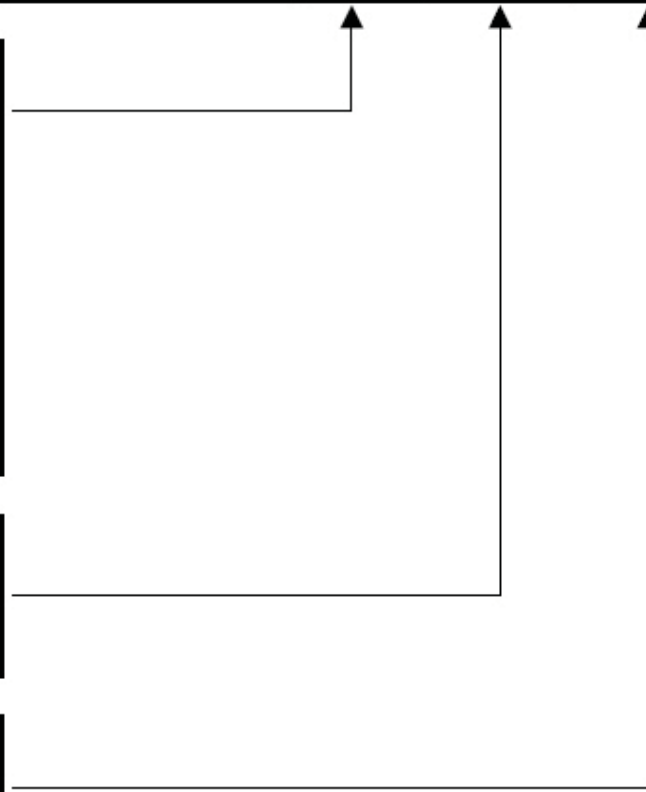
ORDERING CODE

ERVB	20 63	GM16	2450	VA
------	-------	------	------	----

ND	ND / kv value	
15	0.63	15 063
15	1.0	15 10
15	1.6	15 16
15	4	15 4
20	6.3	20 63
25	10	25 10
32	16	32 16
40	25	40 25
50	40	50 40

Valve design		
2 Vie / 2 Way	PN16	GA16
3 Vie / 3 Way	PN16	GM16

Power supply		
24V	50/60Hz	2450
220V	50/60Hz	22050



Options:

Positioner 0...10Vdc (available only for 24V power supply) suffix ... / E05